

CompareDocs-PDF

Installation Procedure

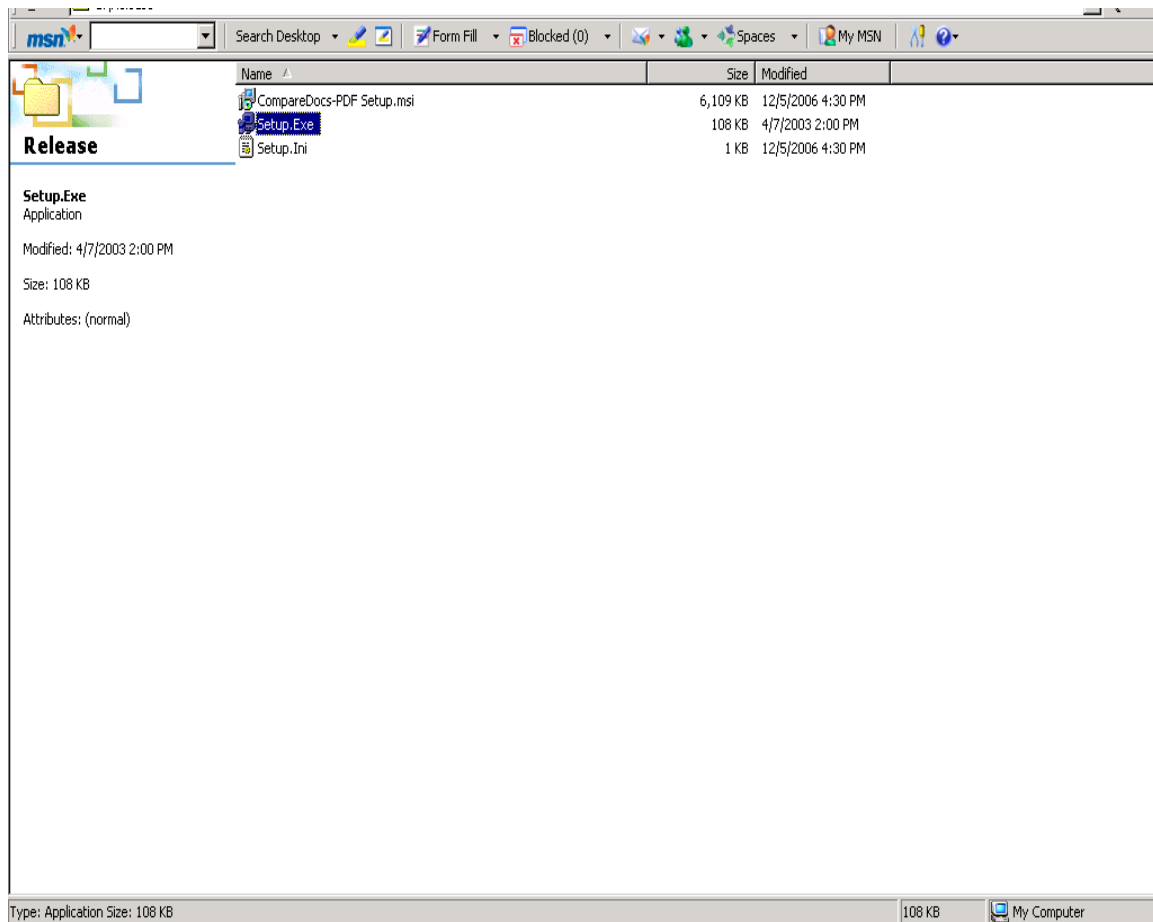
NAME: CompareDocs-PDF

SYNOPSIS: This document describes the process of installing the application on your computer. Please go through the system requirements details before installing the software.

SYSTEM REQUIREMENTS: 128Mb RAM
100MB Free Hard Disk space
800 Mega Hertz Processor
Software – MS Office 2000

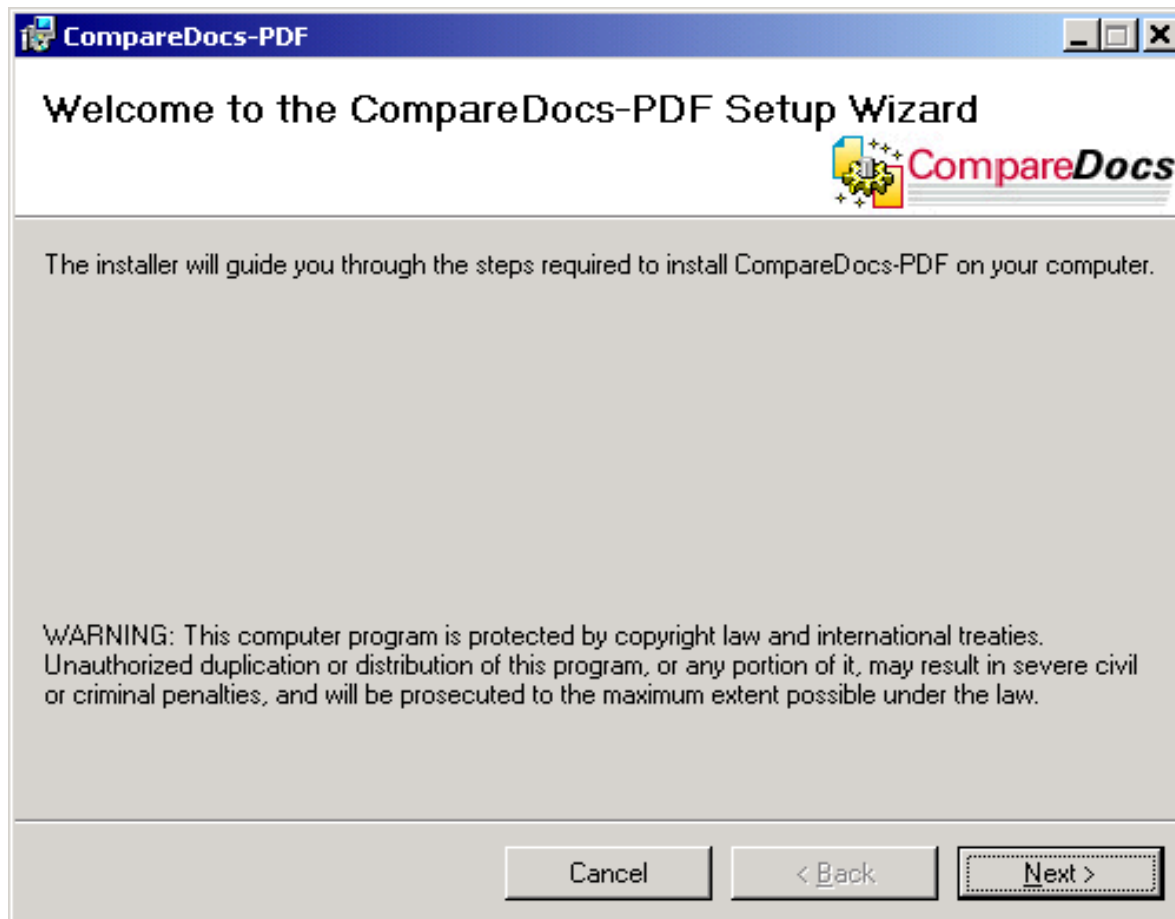
INSTALLATION PROCEDURE:

1. Double click on Setup.Exe to install the CompareDocs-PDF Application.



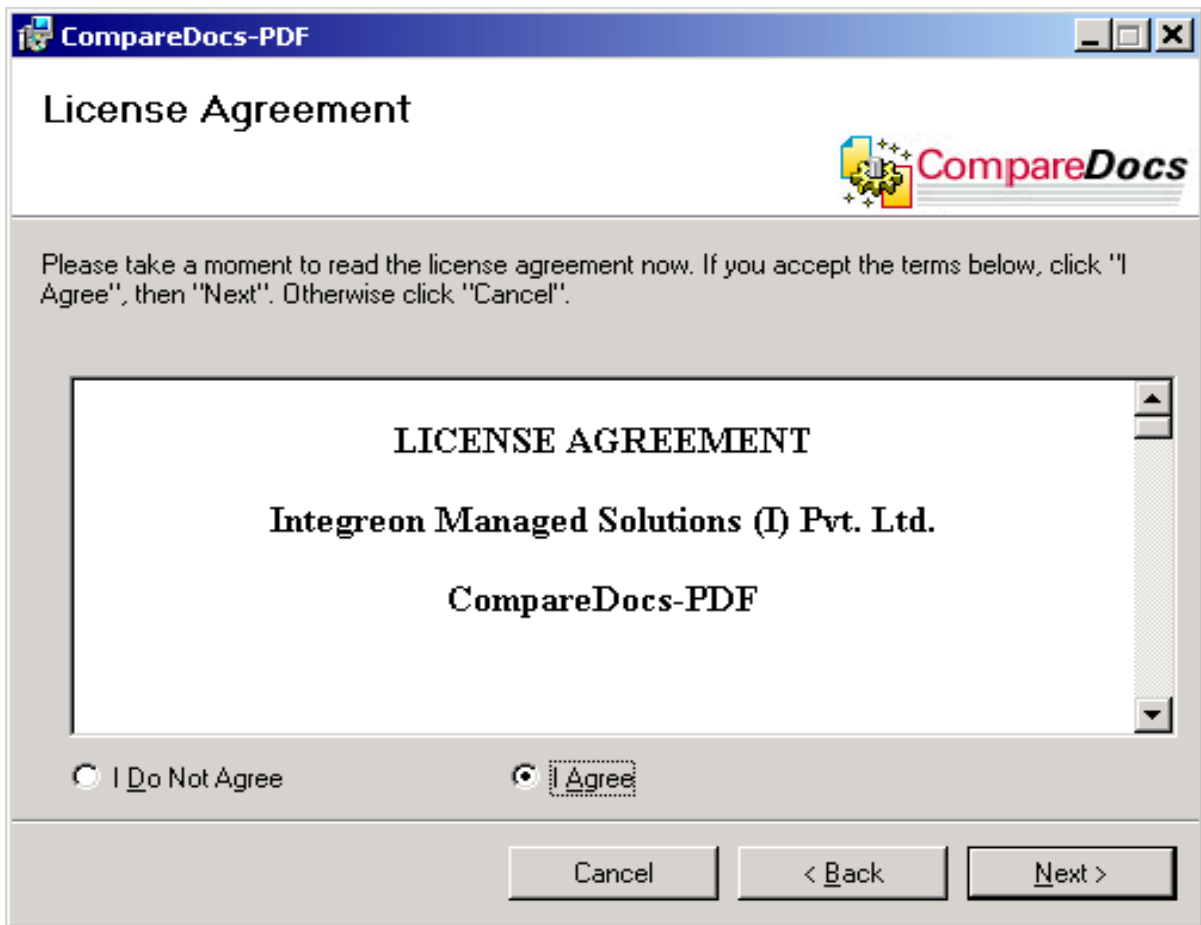
WELCOME PAGE

2. The Wizard will display the welcome and warning note.
3. If you wish to install, then press “Next” or else press, “Cancel” to terminate the installation.



LICENSE PAGE

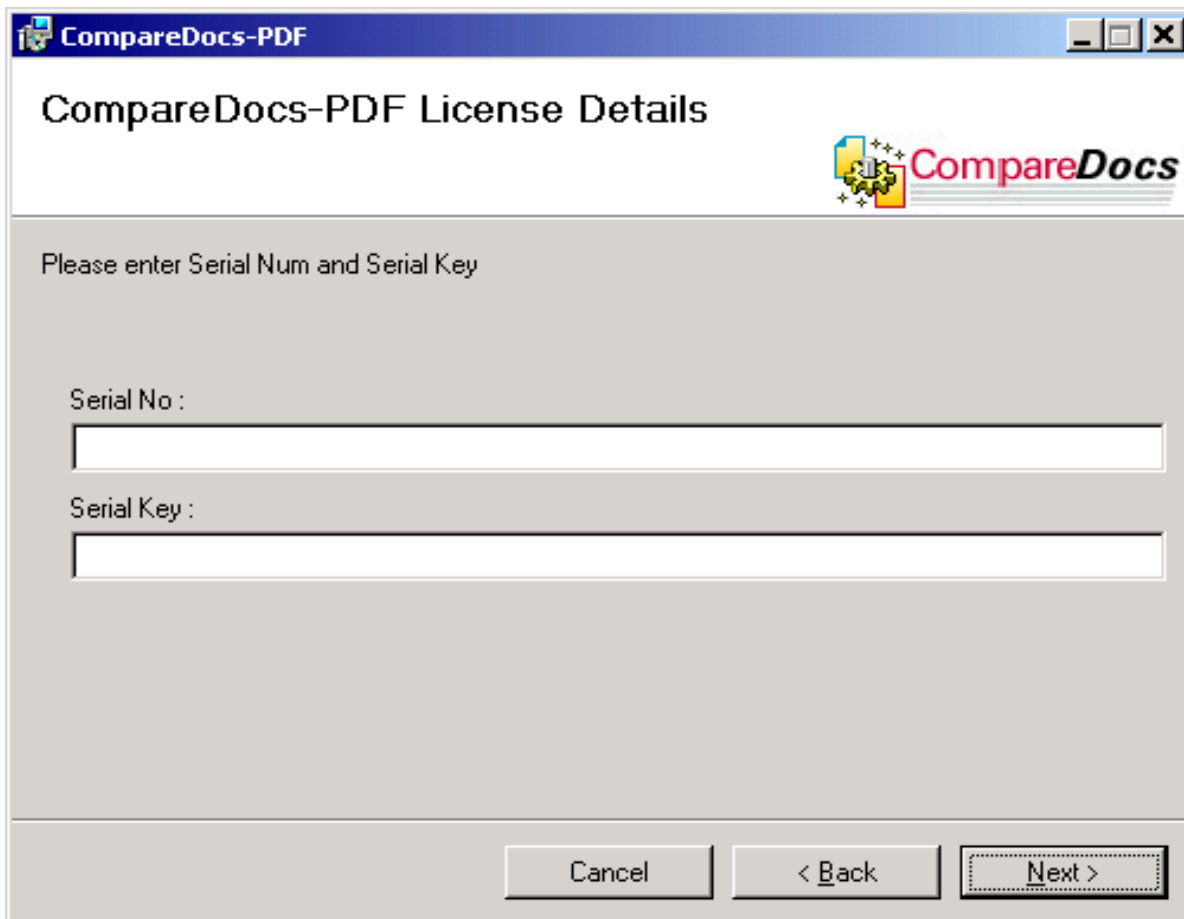
4. If you press next button then, you are asked to read the License Agreement.



5. If you accept the terms then select "I Agree" else select "I Do Not Agree" which terminates the installation.
6. Check "I Agree" and click on "Next" button to continue.

License Details

7. Please enter Serial Number and Serial Key



The screenshot shows a Windows-style dialog box titled "CompareDocs-PDF". The main heading inside is "CompareDocs-PDF License Details". To the right of the heading is the CompareDocs logo, which consists of a yellow gear icon with a blue square and the text "CompareDocs" in red and black. Below the heading, the text "Please enter Serial Num and Serial Key" is displayed. There are two input fields: the first is labeled "Serial No :" and the second is labeled "Serial Key :". At the bottom of the dialog box, there are three buttons: "Cancel", "< Back", and "Next >". The "Next >" button has a dashed border.

CompareDocs-PDF

CompareDocs-PDF License Details

Please enter Serial Num and Serial Key

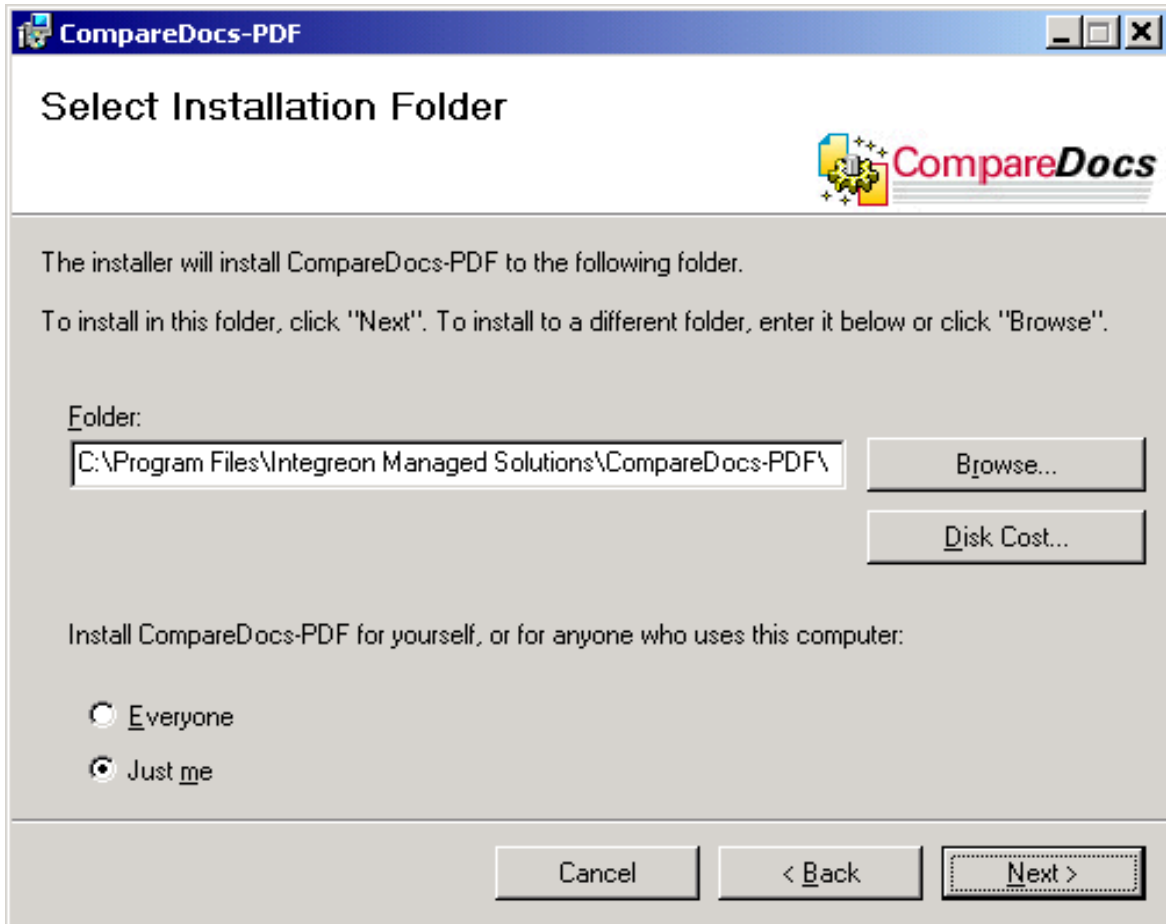
Serial No :

Serial Key :

Cancel < Back Next >

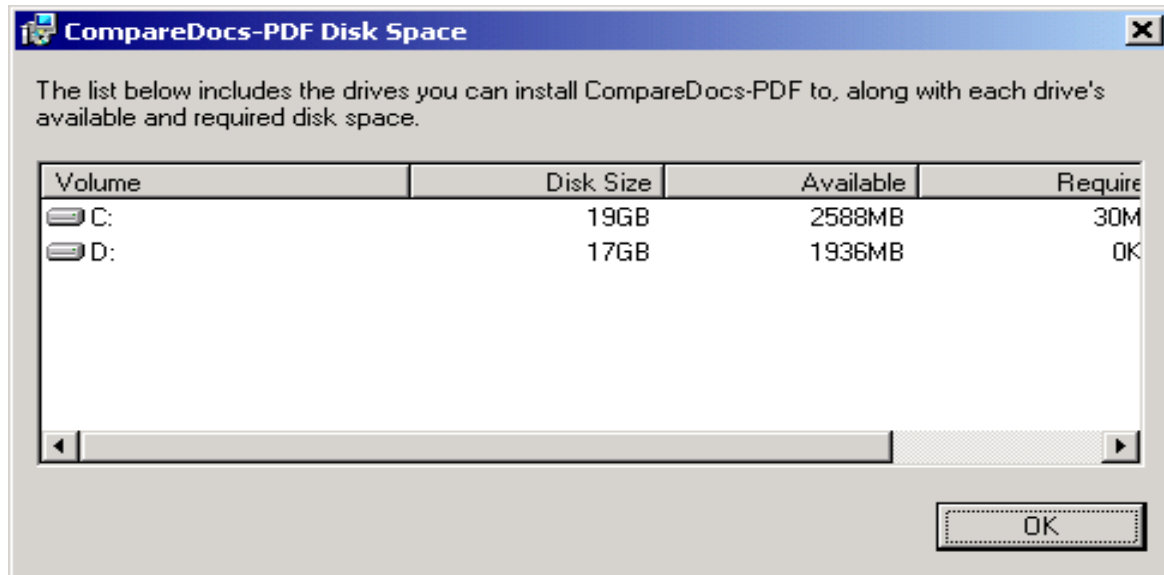
INSTALLATION FOLDER PAGE

8. Now you are asked to select a folder where the software is to be installed. By default you will get "C:\Program Files\Integreon Managed Solutions\CompareDocs-PDF" path. To change the default path you can click the Browse button or you can type the new folder path.

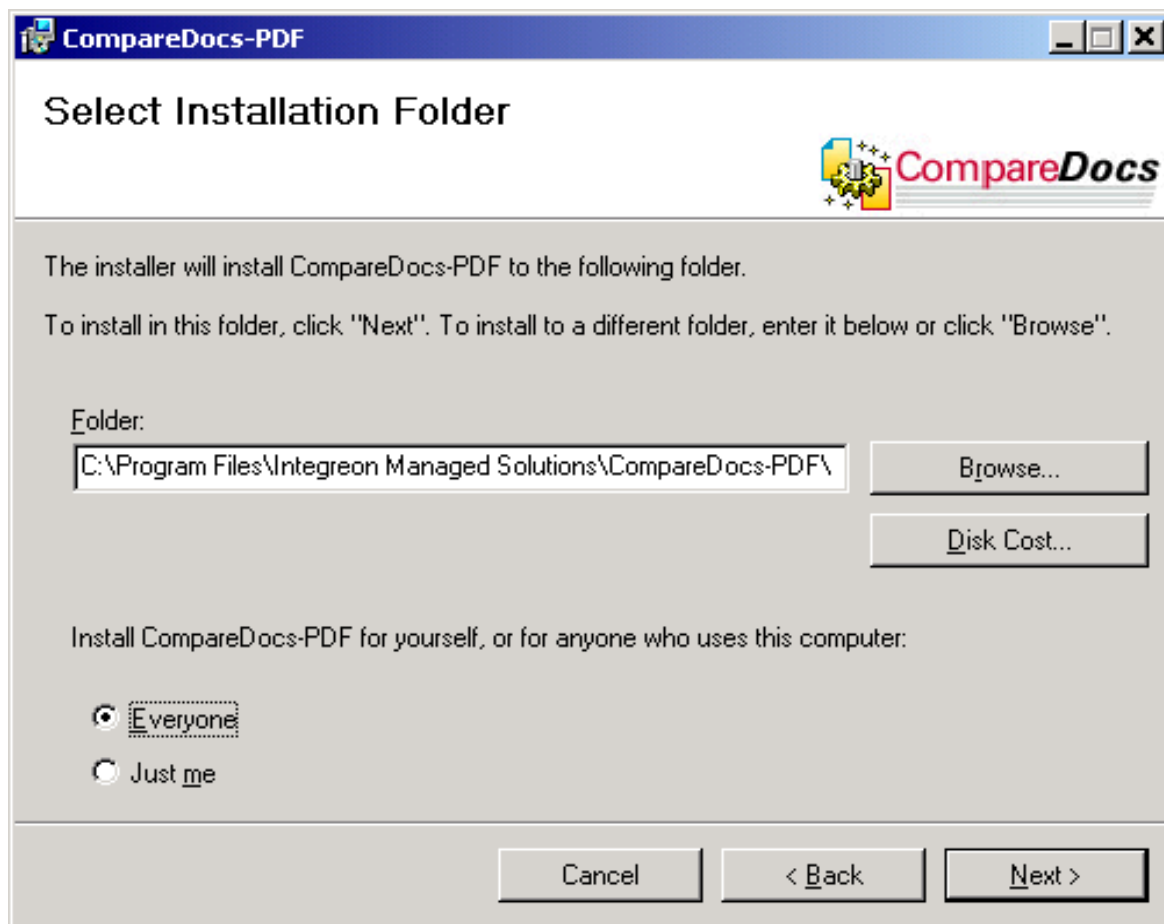


9. User can also have the options to restrict the usage of the software. They are:
- i) Every One (For other users also who use the same Computer)
 - ii) Just me

10. User can view the disk capacities by clicking on the “Disk Cost”.

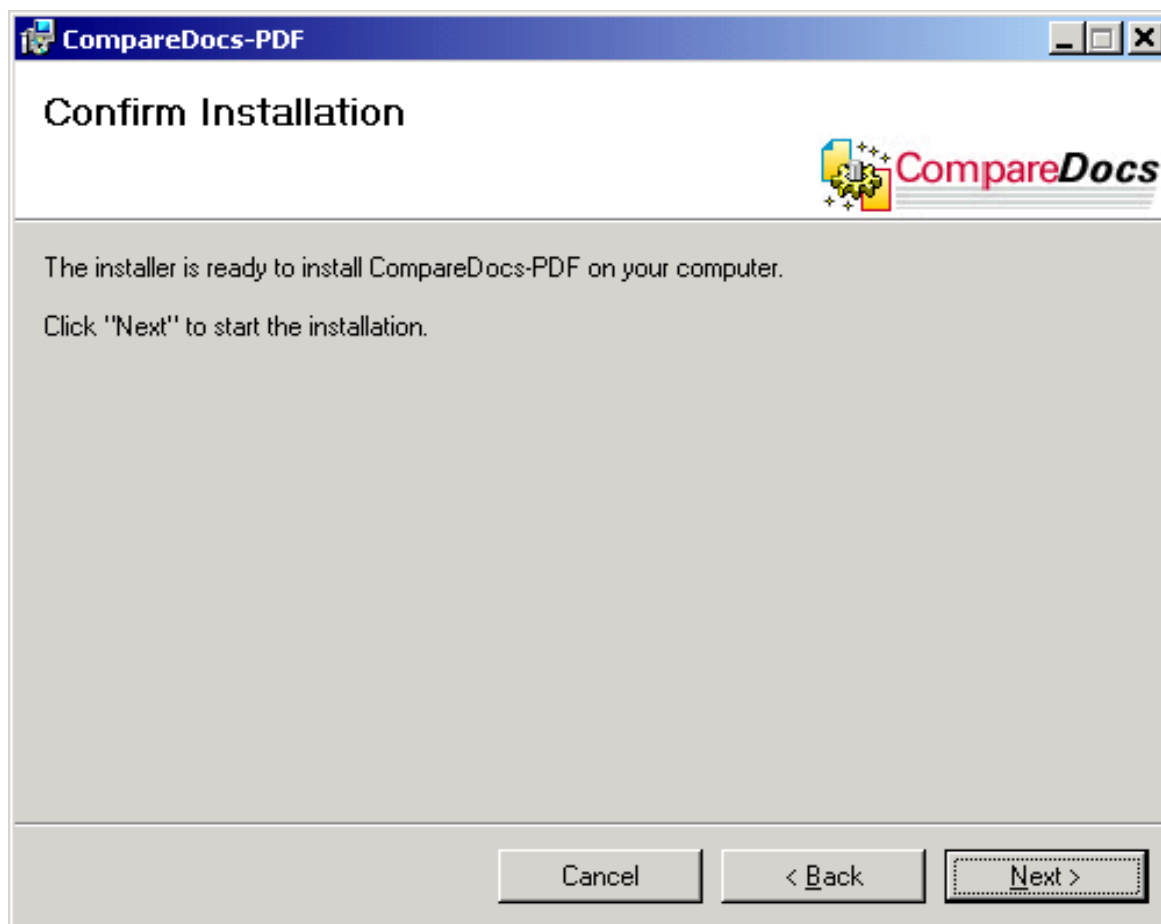


11. Having checked with every option of the installation folder page, press “next” to proceed further.



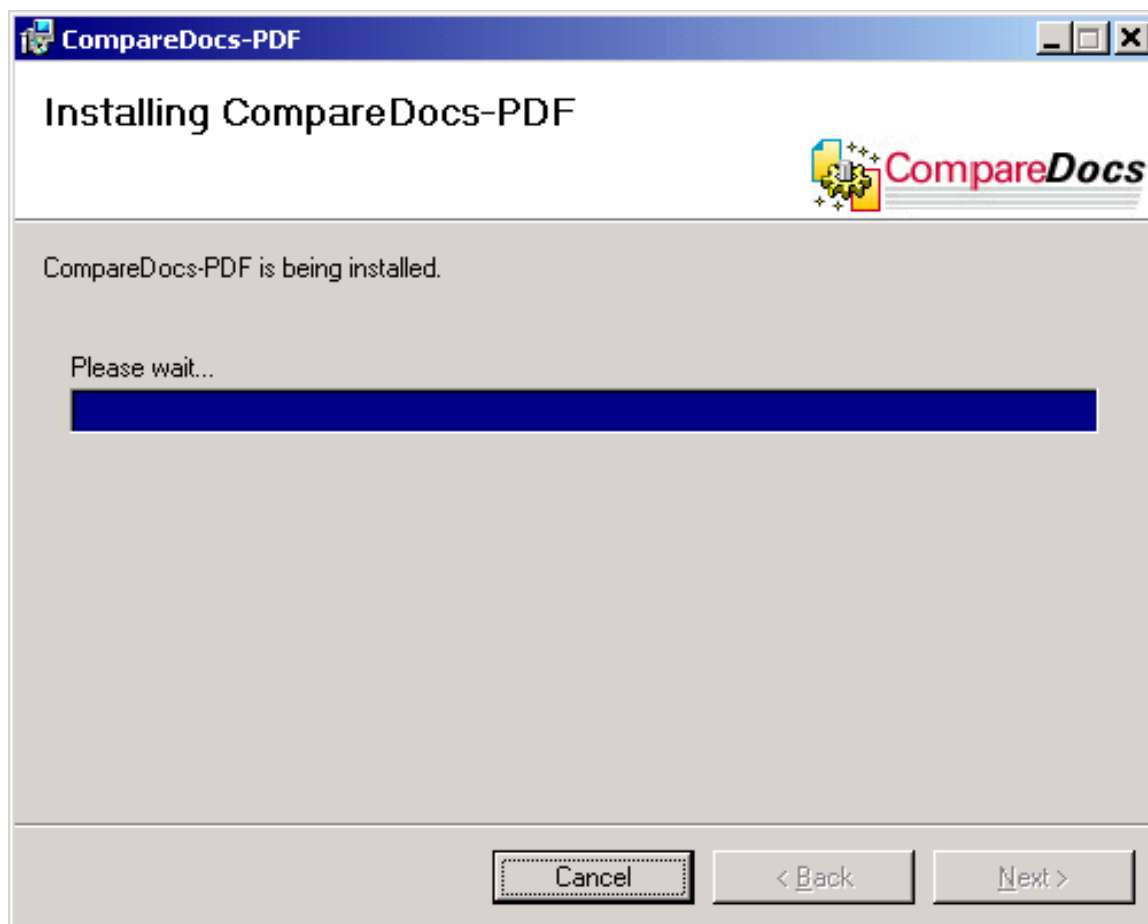
CONFIRMATION OF INSTALLATION PAGE

12. This page prompts you that the installer is ready to install CompareDocs-PDF on your Computer.
13. If user wishes to complete the installation process, then press “Next” else press “Back” to change the previous settings or else press “Cancel” to terminate the installation procedure.



INSTALLING COMPAREDOCS-PDF PAGE

14. If you press on “Next”, then you get the installing CompareDocs-PDF Page, where you are prompted to wait till the installation is complete.



INSTALLATION COMPLETE PAGE

15. After successful installation of CompareDocs-PDF, press “Close” to close the installer.
16. Please read the note on the Installation Complete Page which states that “Please use windows update to check for any critical updates to the .NET framework” if any.

