

dSHIFT Migrator for SharePoint

Get results, not just a product

The SharePoint Migrator can easily move contents and permissions from WSS 3.0 or MOSS 2007 to SharePoint 2010 or SharePoint Online. The SharePoint Migrator can perform even complex migrations in just a few clicks, with a simple drag-n-drop interface. Because it's built on top of the Microsoft SharePoint APIs, risk of content loss is minimal.

Pre-migration Scanning

Gather detailed information on your existing or desired SharePoint environments to ensure a seamless migration path and eliminate confusion to users.

SharePoint Migration

Once you drag and drop the contents to its new destination, the SharePoint Migrator takes over and completes the process.

Scheduled Migration

Scheduling the migration jobs at off-peak hours and in batch ensures minimal impact to the end users.

Backup & Restore

Regular backups of the SharePoint content ensures data safety, and can be restored as needed.

Governance Rules

The governance rules in your existing or desired SharePoint environment can be seen in a one-window operation, saving the time and hassle otherwise spent navigating various screens to consolidate this information.

Notifications

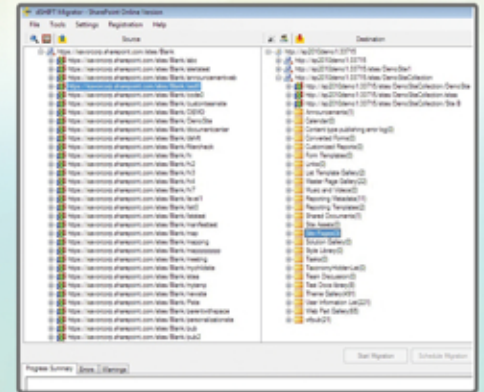
Site-wide notifications or banners on selected sites can be published for a specified timeframe to keep users informed of important updates.

Migration Validation

SharePoint Migrator automatically validates the content integrity to ensure no loss of data and provides a post-migration report with a comprehensive list of this content.

Technical Support

We provide hands-on support to make your migration a success. Support hours are included in every package.



Our team of SharePoint experts have helped thousands of our satisfied customers around the globe, all of whom rely on the SharePoint Migrator and our support services.



Peter Gilbert, BuroHappold

"... I just wanted to say how impressed I have been with your company's responses and work throughout this whole project."



Gayatri Vasan, Symmetricom

"Thank you very much for your excellent and timely support for our migration project. I am very happy with the migration tool..."



Sam Shirley, NBIC

"The migration went very well! Your team was incredibly helpful during the process. Thanks again"

For further information, email at sharepoint@dshift.com or call +1 855 DSHIFT1 (+1 855 374 4381)

dSHIFT by Xavor Corporation
8105 Irvine Center Drive, Ste 780,
Irvine, California 92618, USA

Tel: +1 949 264 1472
Fax: +1 949 264 1471
Website: dshift.com

COMPATIBILITY

FROM / TO	WSS 3.0	MOSS 2007	SharePoint 2010	SharePoint Online
WSS 3.0	✓	✓	✓	✓
MOSS 2007		✓	✓	✓
SharePoint 2010		✓	✓	✓
SharePoint Online				✓

FEATURES

Features	On-Premises	Online
User Mapping	✓	✓
Batch Migration	✓	✓
Support for Remote or Cross-Domain Migrations	✓	✓
Selective Content Migration	✓	✓
Restructure or Reorganize Site Collections and Sites	✓	✓
Post-Migration Report	✓	✓
Advanced Pre-Migration Scanner	✓	✓
Scheduled Migration	✓	✓
Site-Wide Notification Banners	✓	✓
Backup and Restore	✓	✓
Claim-Based Authentication	✓	✓
Item-Level Migration	✓	✗
Governance Rules	✓	✗
Column Mapping	✓	✗
Site Locks and Site Collection Management	✓	✗

CONTENT

Supported Content	On-Premises	Online
All Item Versions and Associated Metadata	✓	✓
Site, List, Folder and Item-Level Permissions	✓	✓
All List Types (List Views, Discussion Boards, Surveys, Image Libraries, Calendar and Events, Link Lists, Issue Lists, Custom Lists, etc.)	✓	✓
Site Collections	✓	✓
Look-Up Fields and Lists	✓	✓
SharePoint Foundation Sites	✓	✓
Blogs, Wikis and Enterprise Wikis	✓	✓
Publishing Sites	✓	✓
Meeting Workspaces	✓	✓
Document and Form Libraries	✓	✓
Multi-level Folders	✓	✓
Custom Site Templates	✓	✓
Web Parts	✓	✓
Navigation and Update URLs and Links	✓	✓
Content Types	✓	✓
Workflows	✓	✗

For further information, email at sharepoint@dshift.com
or call +1 855 DSHIFT1 (+1 855 374 4381)



dSHIFT by Xavor Corporation
8105 Irvine Center Drive, Ste 780,
Irvine, California 92618, USA

Tel: +1 949 264 1472
Fax: +1 949 264 1471
Website: dshift.com