

Installation Guide
GanttChart for ClearQuest
Version 1.3

LLC CM-Consult

Moscow

2010



CM-Consult & Rational-Tools project

www.rational-tools.info
www.cmcons.com
rational.tools.info@gmail.com

Partners in Europe:
IBTS - International Business
& Technology Solutions
<http://www.ibts-online.com>
info@ibts-online.com



Contents

1. INTRODUCTION	3
1.1 FIELD OF APPLICATION OF THIS DOCUMENT	3
1.2 PURPOSE OF THIS DOCUMENT	3
1.3 IMPLEMENTATION	3
1.4 SYSTEM REQUIREMENTS	3
2. INSTALLATION PACKAGE.....	3
3. INSTALLATION.....	4
4. INSTALLATION OF LICENSE PLUG-IN.....	13
5. UPDATE	22
6. UNINSTALLATION	22
7. KNOWN ISSUES	26
7.1 PROBLEMS WITH CLEARQUEST 7.0 AFTER THE PLUG-IN INSTALLATION	26

1. Introduction

1.1 Field of Application of This Document

This Guide is intended for administrators of ClearQuest.

1.2 Purpose of This Document

The purpose of this document is to provide administrators with instructions for installing, updating and uninstalling GanttChart for ClearQuest.

1.3 Implementation

GanttChart for ClearQuest is implemented as a plug-in for the Eclipse client for IBM Rational ClearQuest.

1.4 System Requirements

To be able to use the GanttChart for ClearQuest plug-in you must have

- IBM Rational ClearQuest Eclipse Client 7.0.0 or later version.

2. Installation Package

The installation package includes the following files:

1. **InstallGuide_EN.pdf** – this document.
2. **UserGuide_EN.pdf** – the instruction for using the program.
3. **com.cmc.ganttchart.site.zip** – installation package for the plug-in.
4. **com.cmc.ganttchart.lic.site.zip** – installation package for the license plug-in.

3. Installation

The plug-in is installed using the regular mechanism of installation and integration of modules implemented in the Eclipse environment – the same mechanism that underlies the integration of ClearQuest 7.x.x.x.

To install the plug-in, perform the following steps:

1. In the Help menu, select Software Updates, Find and Install (see Figure 1. Launching the module installation)

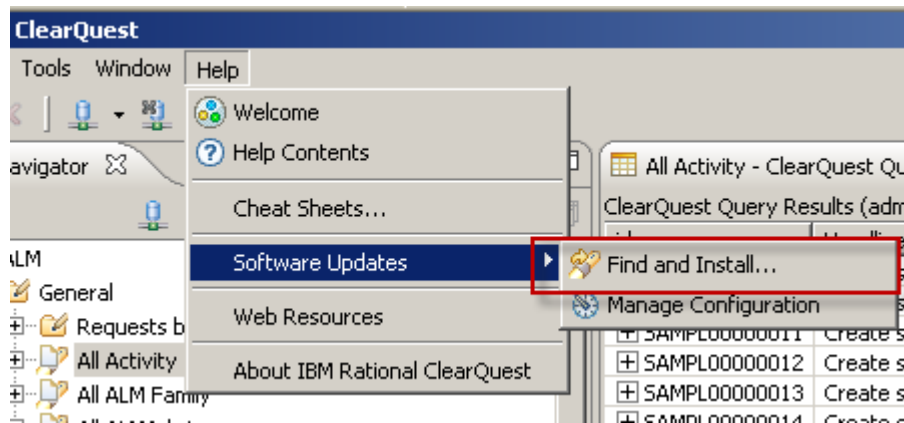


Figure 1. Launching the module installation

2. The Install/Update dialog box opens, where you should select the way of searching for a new module to install. Select the Search for new features to install option here (see Figure 2. Selecting the installation type)

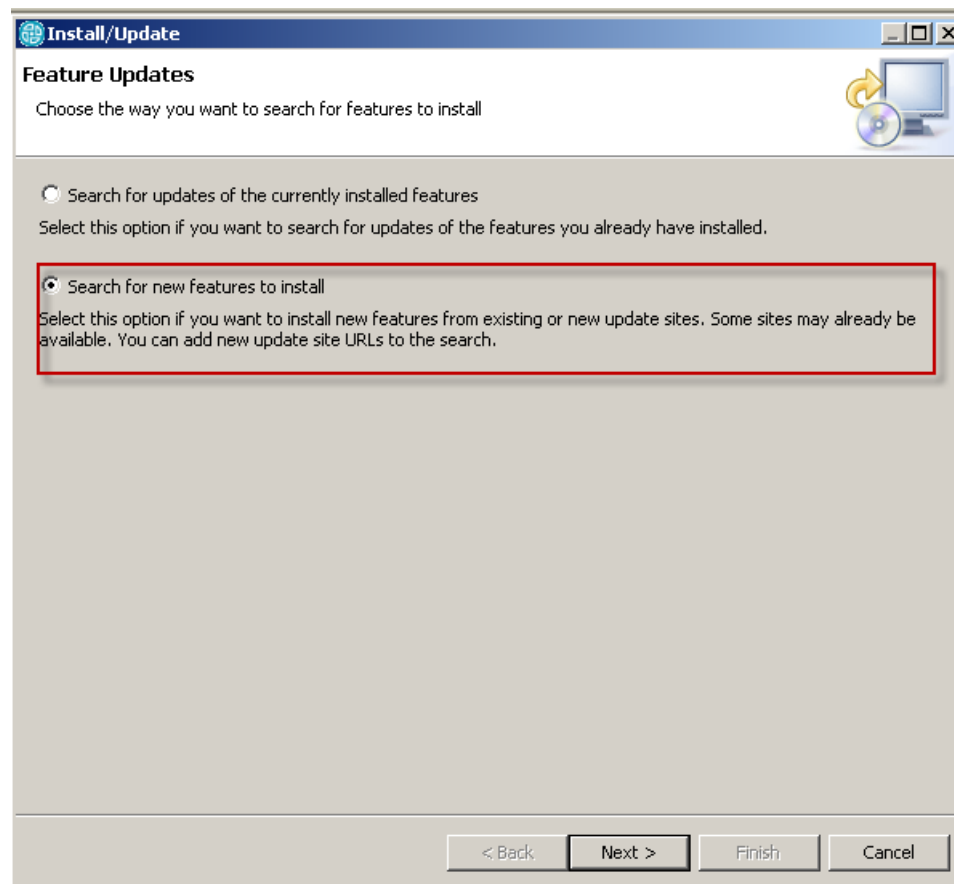


Figure 2. Selecting the installation type

3. Next, you should select the source where to search for the new modules. Click New Archived Site (see Figure 3. Selecting the installation source).

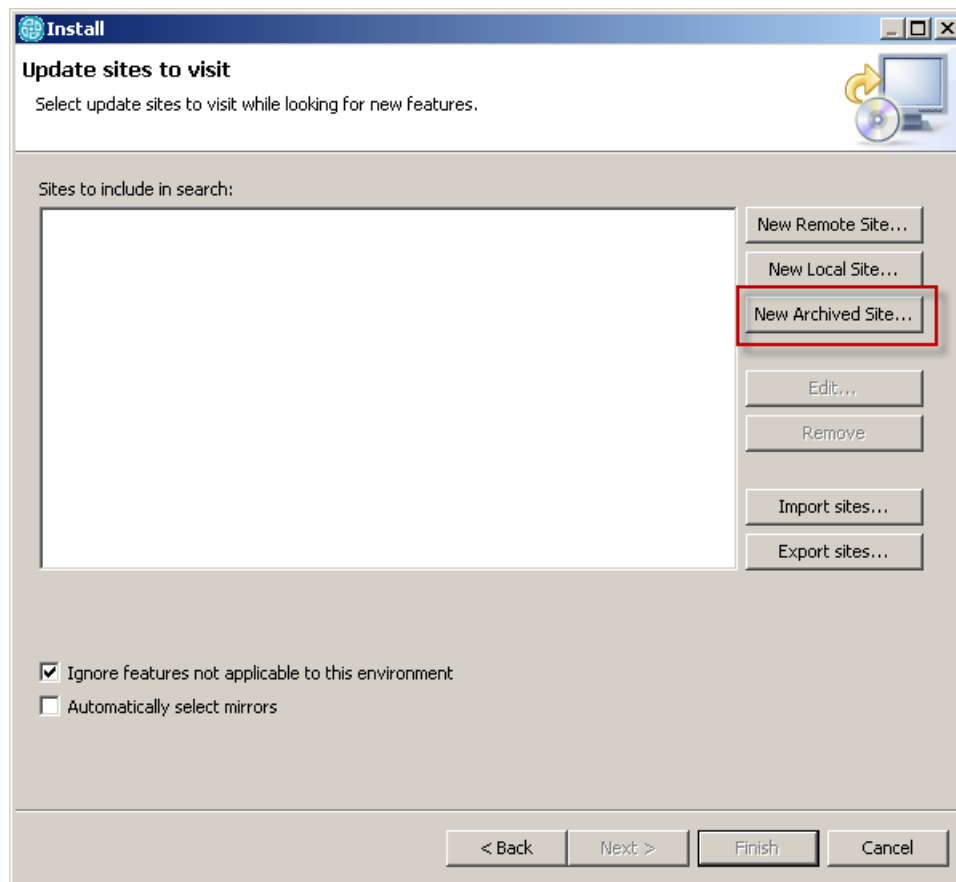


Figure 3. Selecting the installation source

4. In the next dialog box, select the archive file containing the installation package
(see Figure 4. Selecting the archive with the module installation package)

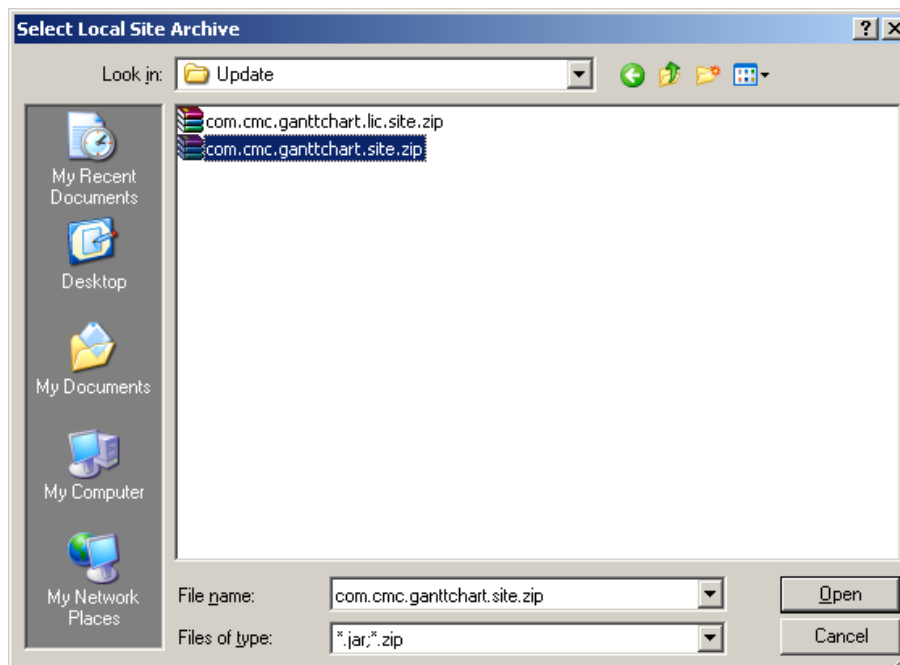


Figure 4. Selecting the archive with the module installation package

5. The installer defines what modules are in the installation package and offers to select the modules to install. Select `com.cms.ganttchart.site.zip` and click Finish (see Figure 5. Selecting the module from the installation package).

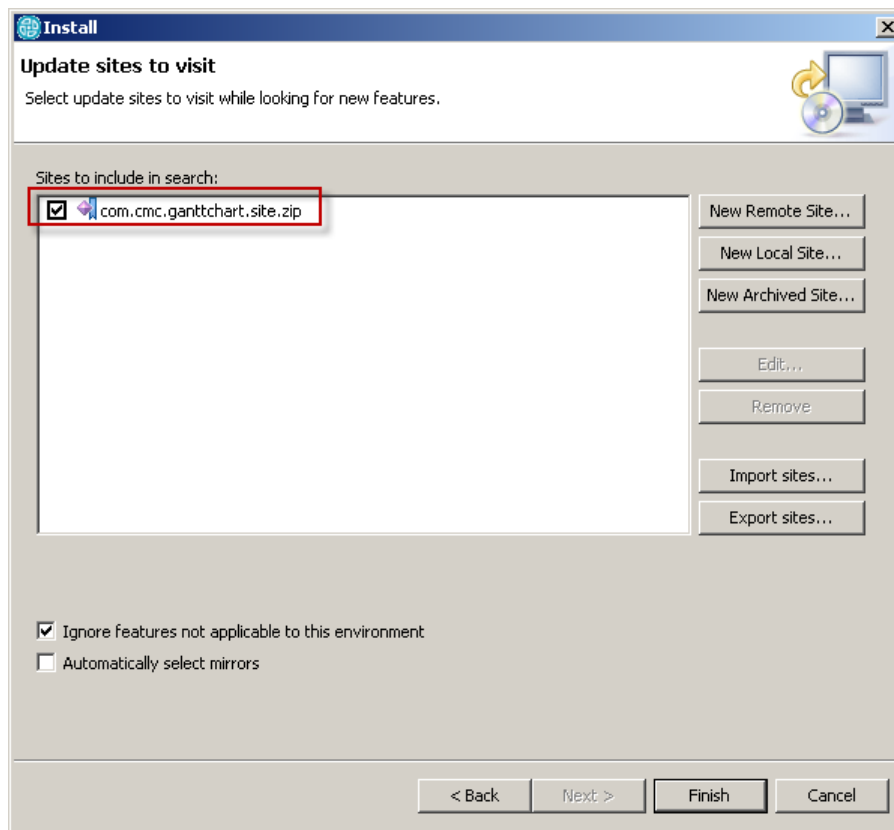


Figure 5. Selecting the module from the installation package

6. This dialog box (see Figure 6. Confirming the list of modules to be installed) contains a list of selected modules. To confirm the installation, select the module name and click Next.

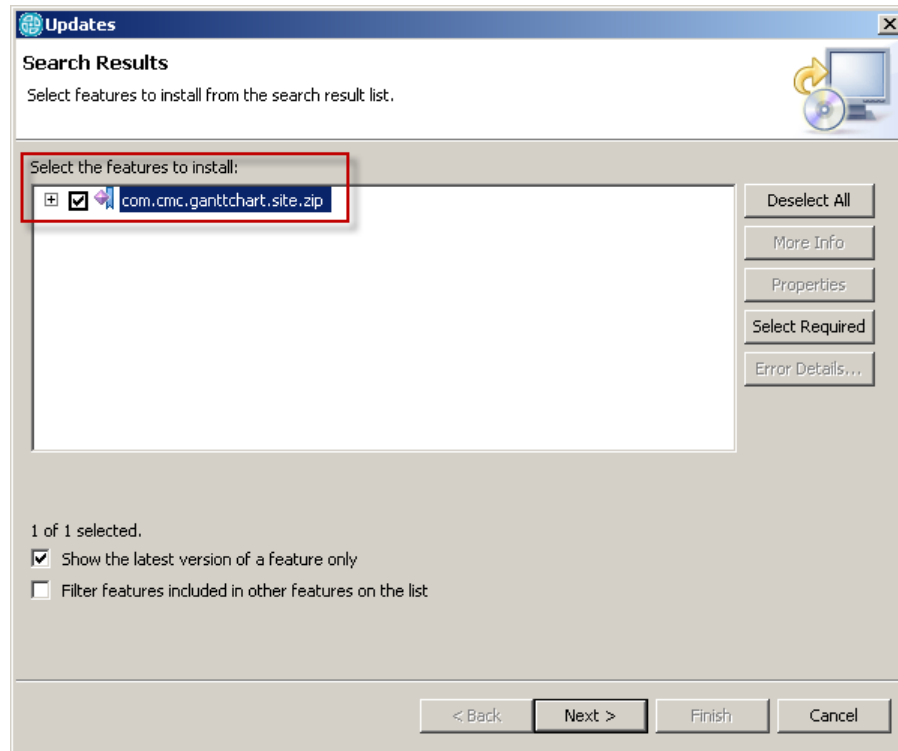


Figure 6. Confirming the list of modules to be installed

7. The next dialog box contains the license agreement and offers to accept it (see Figure 7. Terms of the license agreement). Select the I accept the terms in license agreement option and click Next.

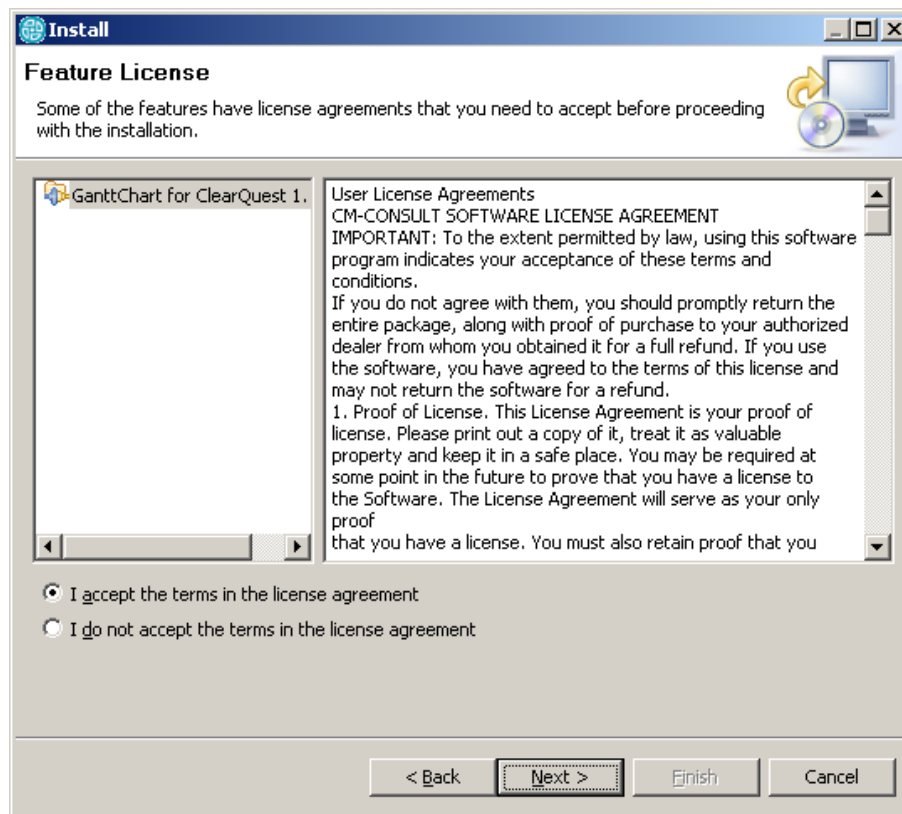


Figure 7. Terms of the license agreement

8. Then the dialog box opens where the module characteristics and the installation directory are displayed (see Figure 8. List of installed modules). In this dialog box, click Finish.

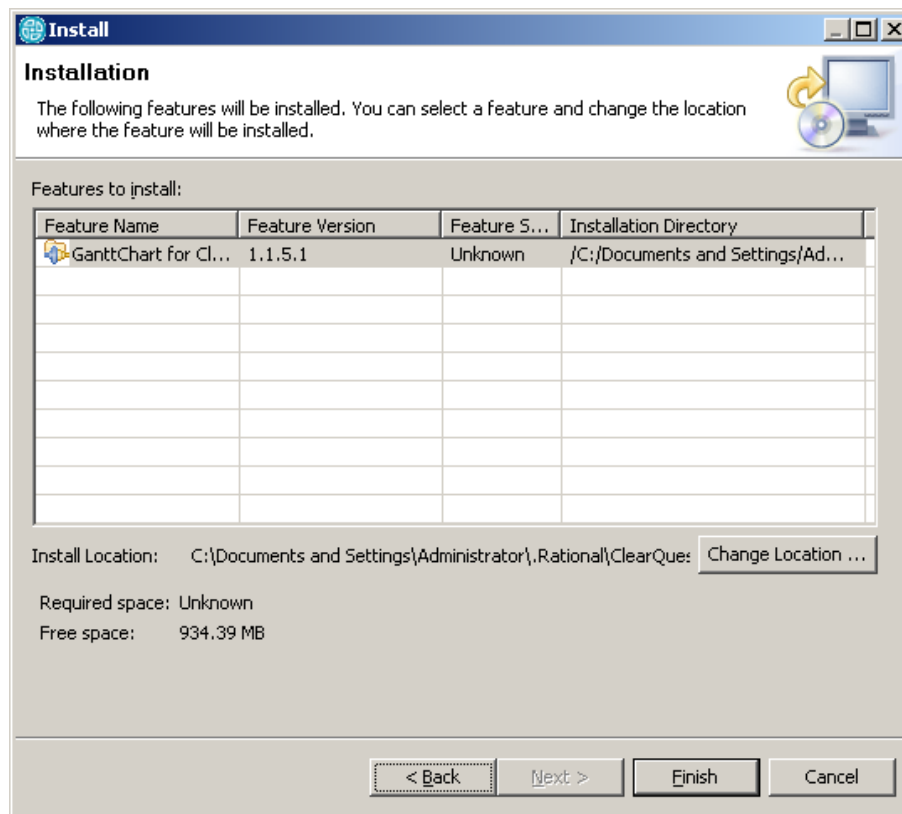


Figure 8. List of installed modules

9. In the next dialog box, the information about module's digital signature is displayed. (see Figure 9. Information about the module's digital signature). To install the module, click Install.

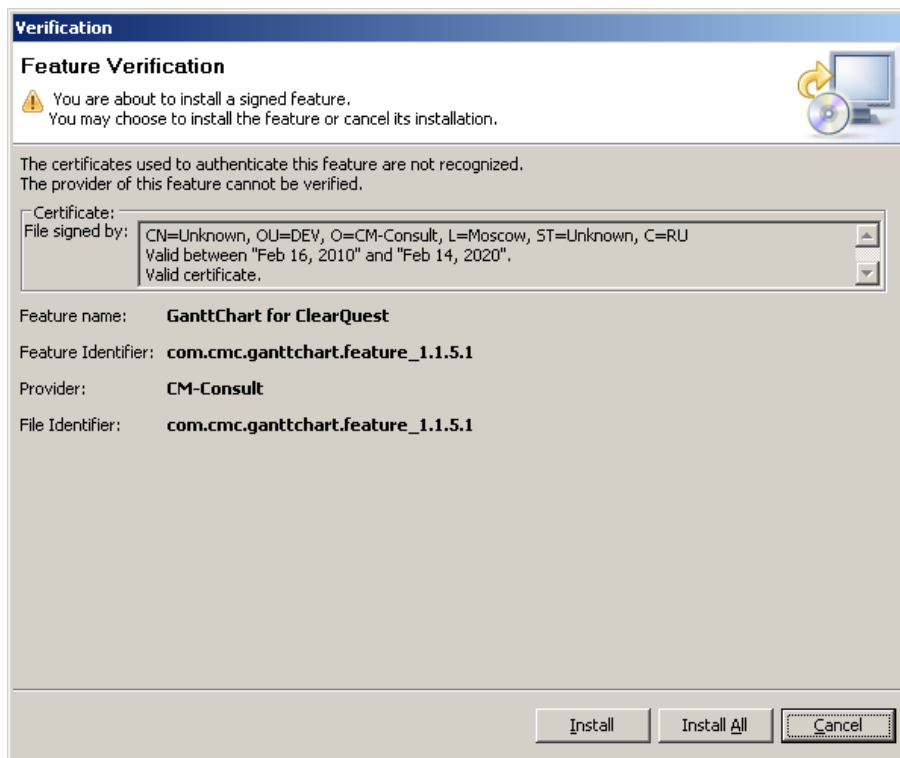


Figure 9. Information about the module's digital signature

10. After the installation is completed, you need to restart the application. The next dialog box will offer you to restart ClearQuest now or later (see Figure 10. After the installation is completed, the installer offers you to restart application)

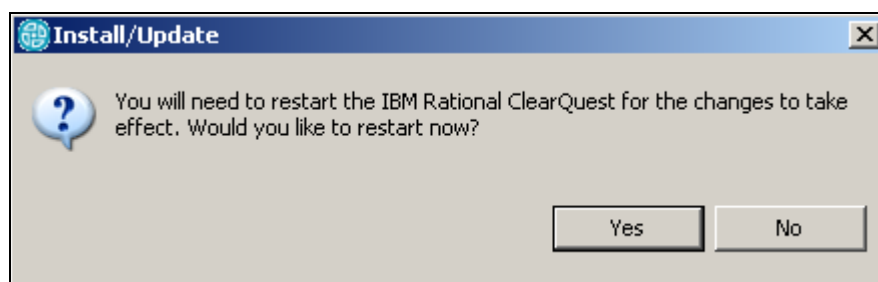


Figure 10. After the installation is completed, the installer offers you to restart application

11. After the restart of the application, the new item appears in the menu bar – **CMC Plug-ins**.

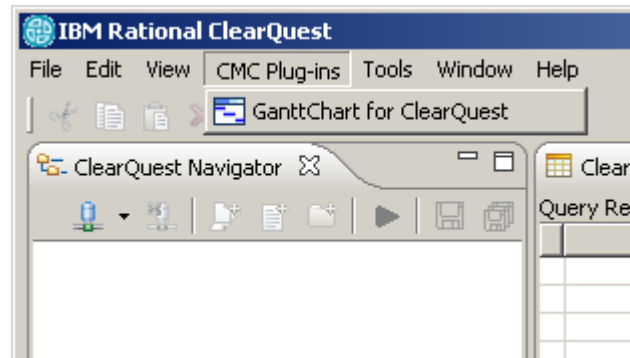


Figure 11. Result of the installation

4. Installation of license plug-in

After installing the plug-in GanttChart for ClearQuest works only in demo mode:

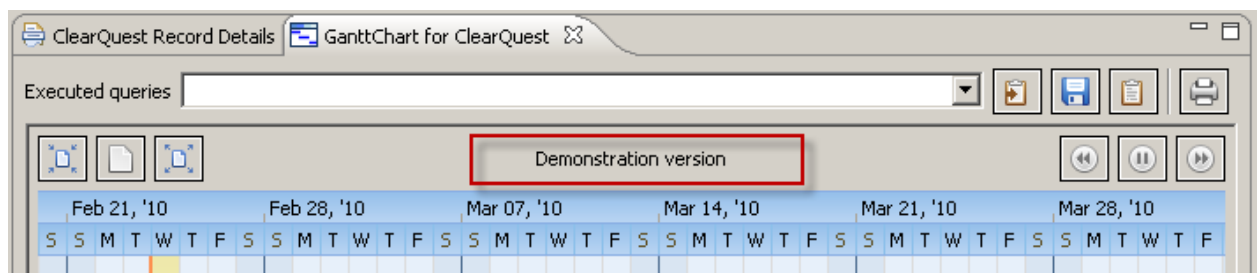


Figure 12. Demo mode

For enabling all features the license plug-in must be installed. The installation procedure of the license plug-in has the same steps as for plug-in GanttChart for ClearQuest.

To install the license plug-in, perform the following steps:

12. In the Help menu, select Software Updates, Find and Install (see Figure 13. Launching the module installation)

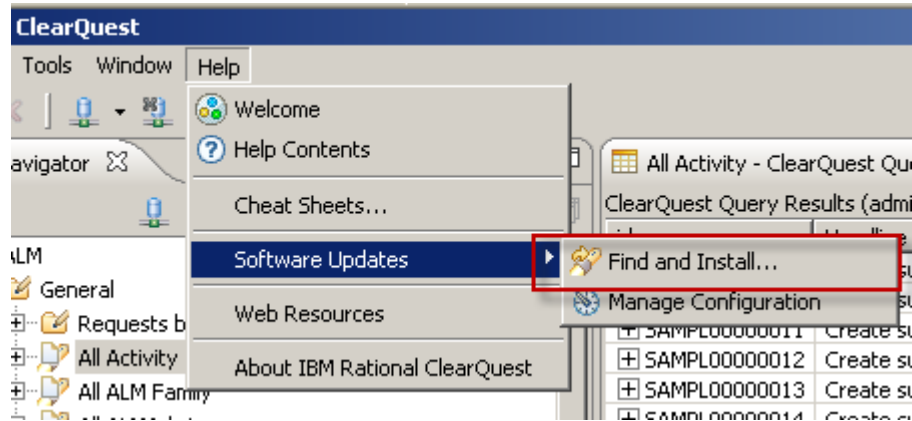


Figure 13. Launching the module installation

13. The Install/Update dialog box opens, where you should select the way of searching for a new module to install. Select the Search for new features to install option here (see Figure 14. Selecting the installation type)

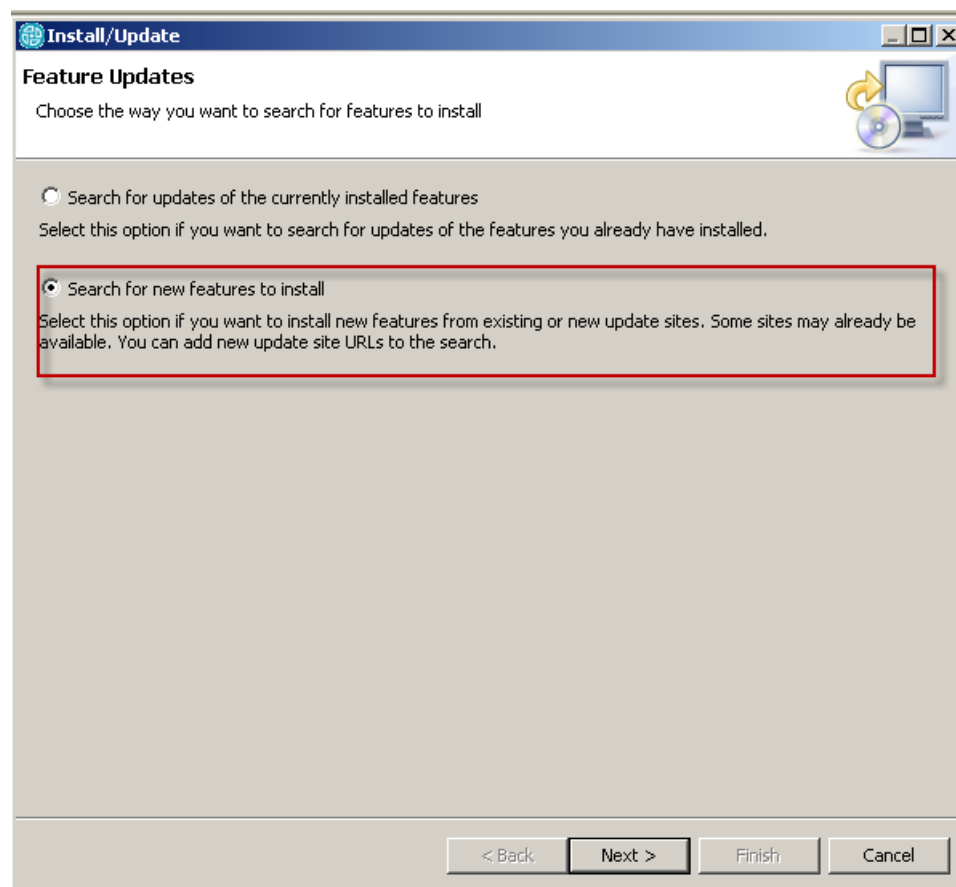


Figure 14. Selecting the installation type

14. Next, you should select the source where to search for the new modules. Click New Archived Site (see Figure 15. Selecting the installation source).

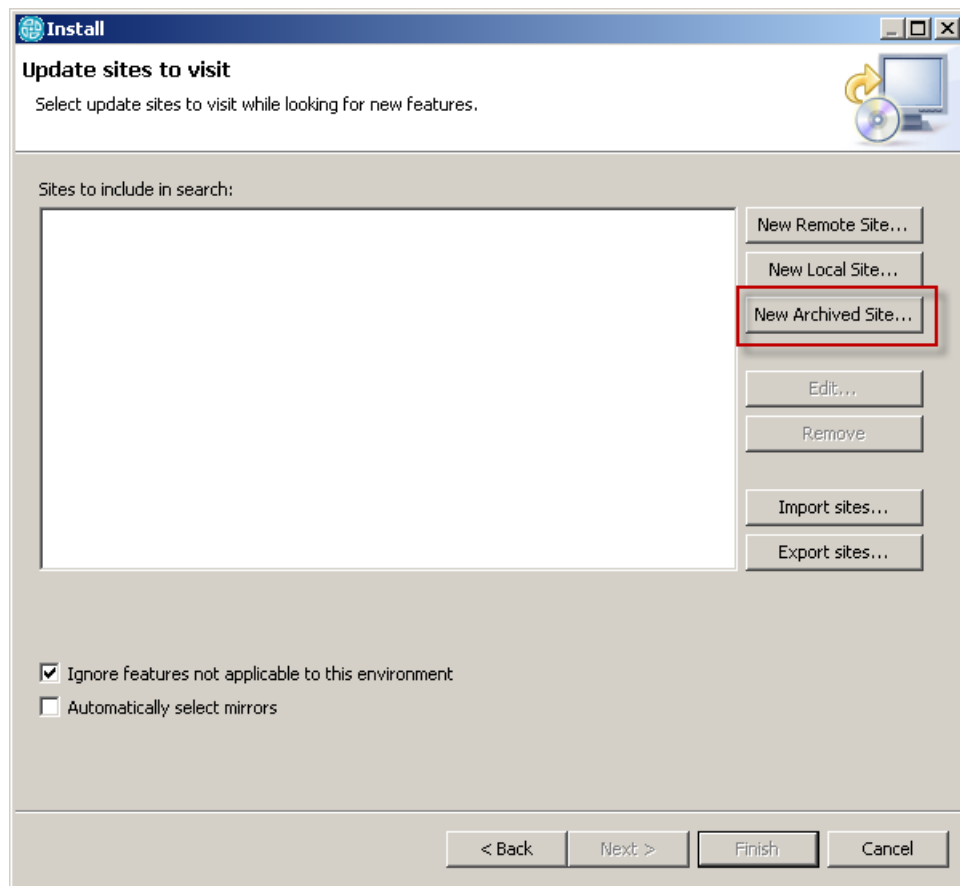


Figure 15. Selecting the installation source

15. In the next dialog box, select the archive file containing the installation package (see Figure 16. Selecting the archive with the license module installation package)

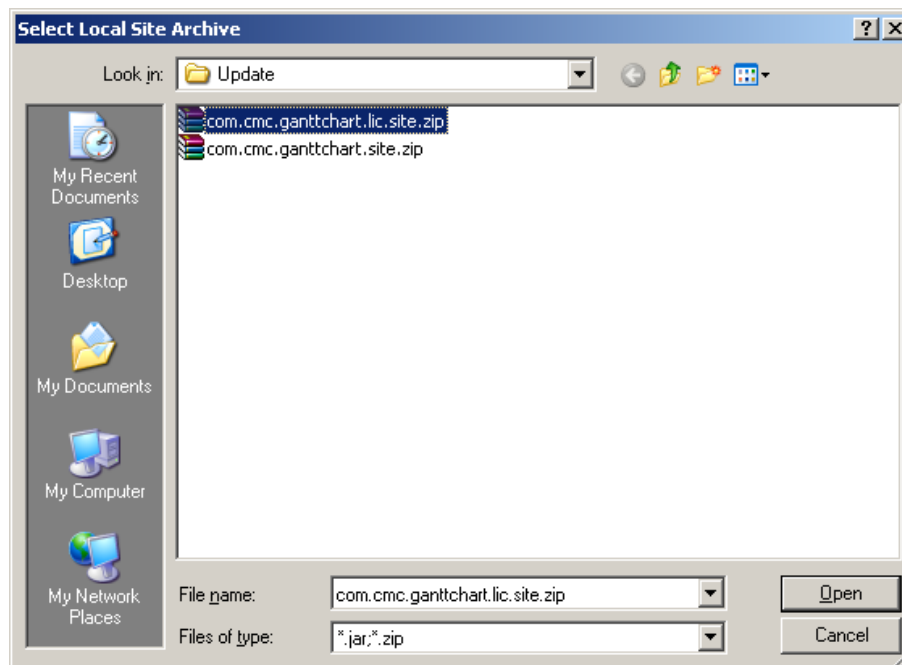


Figure 16. Selecting the archive with the license module installation package

16. The installer defines what modules are in the installation package and offers to select the modules to install. Select `com.cms.ganttchart.lic.site.zip` and click Finish (see Figure 17. Selecting the license module from the installation package).

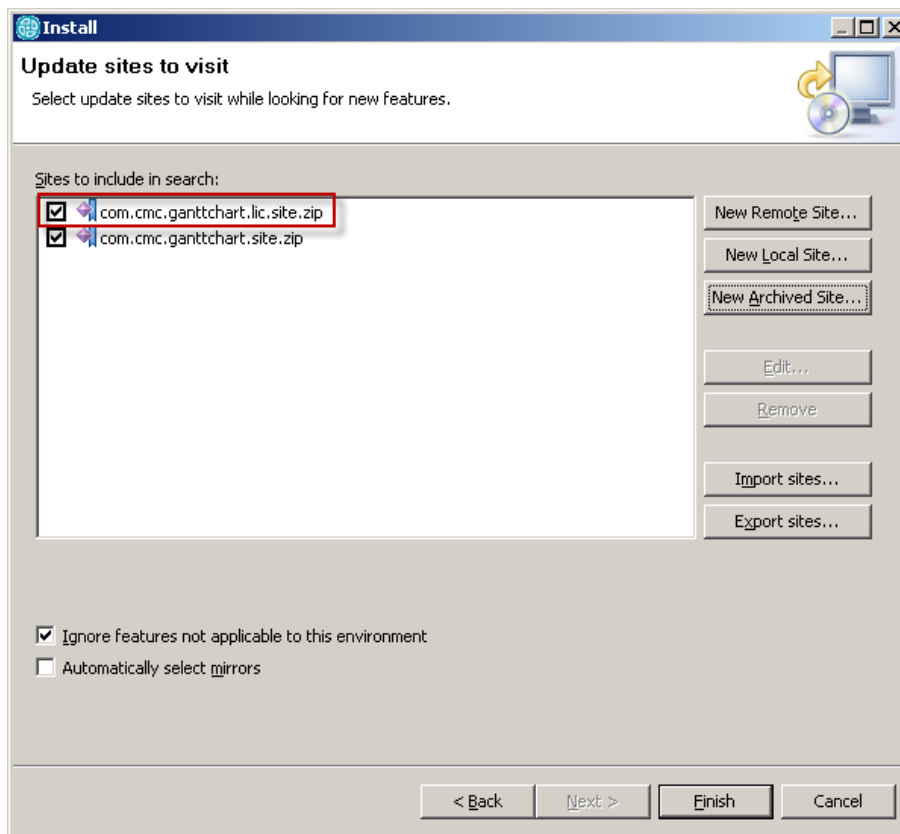


Figure 17. Selecting the license module from the installation package

17. This dialog box (see Figure 18. Confirming the list of modules to be installed) contains a list of selected modules. To confirm the installation, select the module name and click Next.

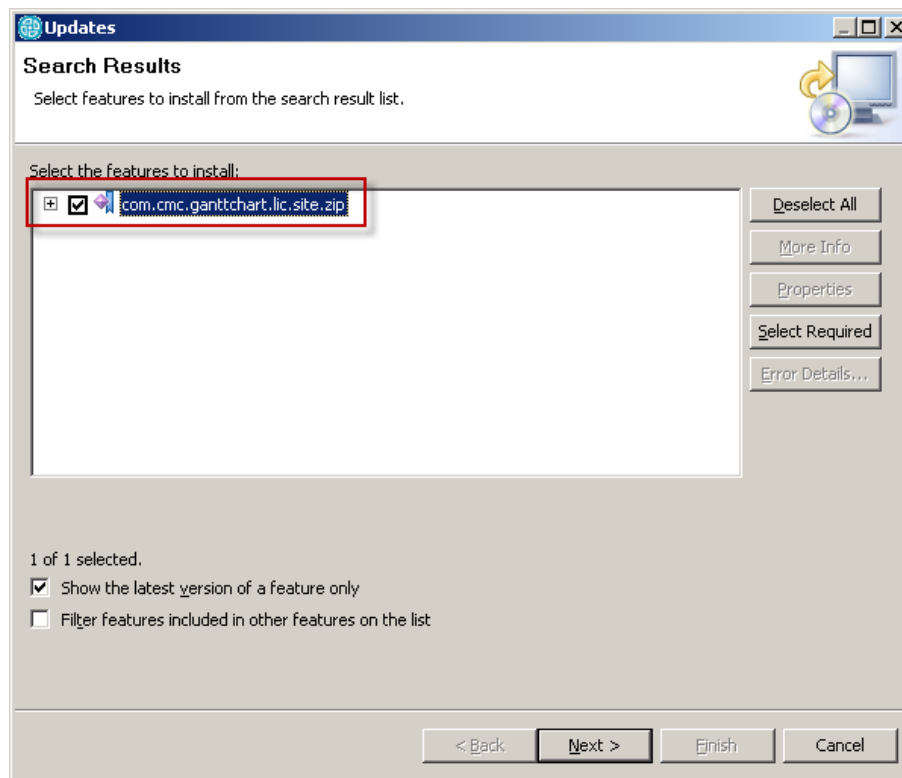


Figure 18. Confirming the list of modules to be installed

18. The next dialog box contains the license agreement and offers to accept it (see Figure 19. Terms of the license agreement). Select the I accept the terms in license agreement option and click Next.

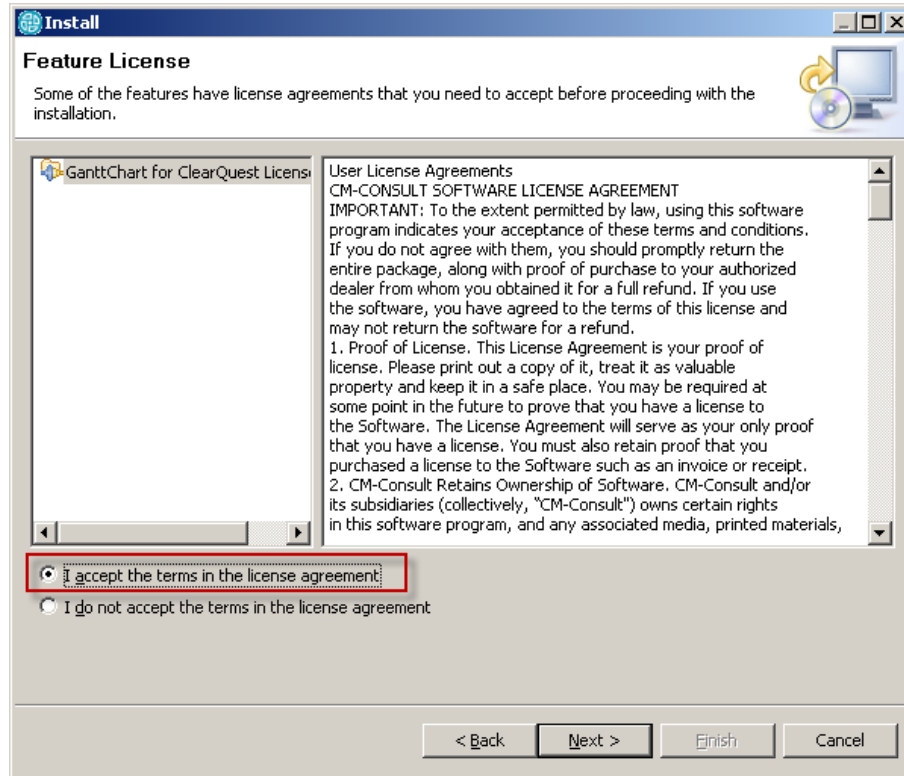


Figure 19. Terms of the license agreement

19. Then the dialog box opens where the module characteristics and the installation directory are displayed (see Figure 20. List of installed modules). In this dialog box, click Finish.

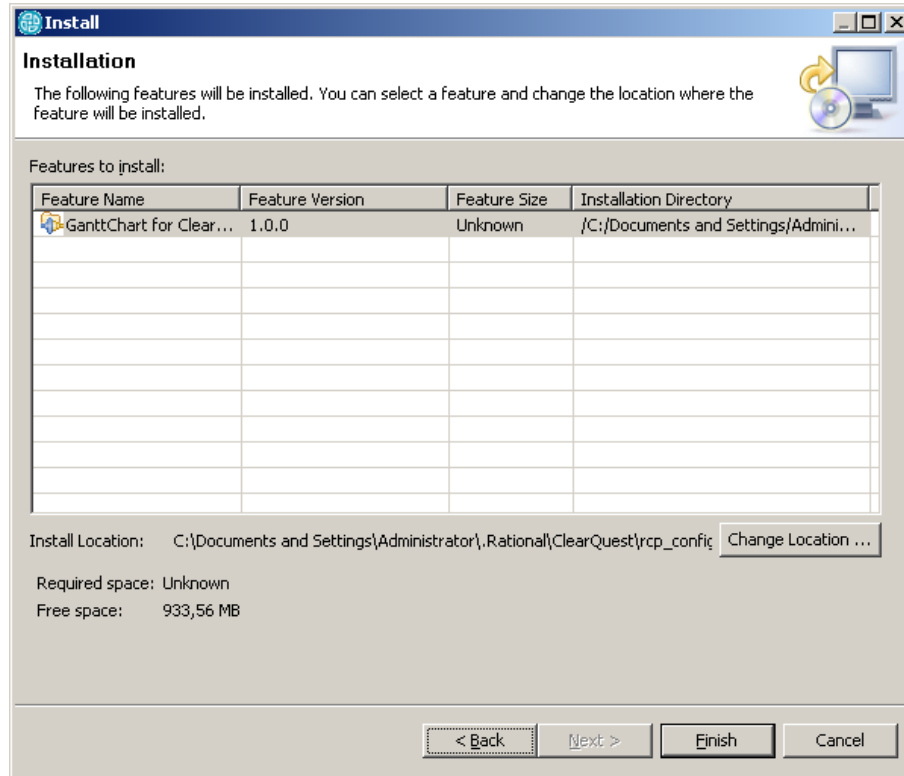


Figure 20. List of installed modules

20. In the next dialog box, the information about module's digital signature is displayed. (see Figure 21. Information about the module's digital signature). To install the module, click Install.

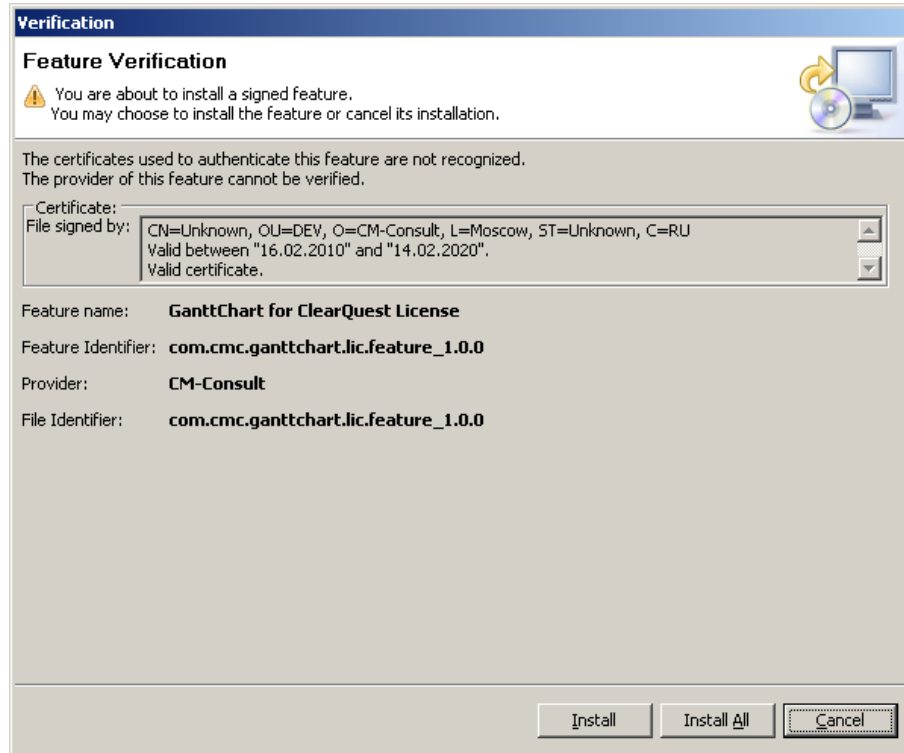


Figure 21. Information about the module's digital signature

21. After the installation is completed, you need to restart the application. The next dialog box will offer you to restart ClearQuest now or later (see Figure 22. After the installation is completed, the installer offers you to restart application)

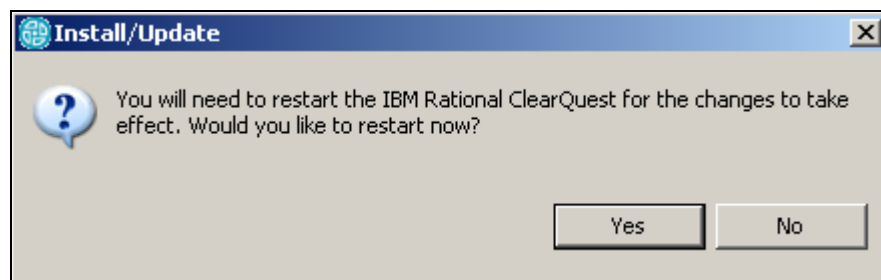


Figure 22. After the installation is completed, the installer offers you to restart application

22. After the restart of the application, on a toolbar of plug-in there will be a text message corresponding to type of the installed license.

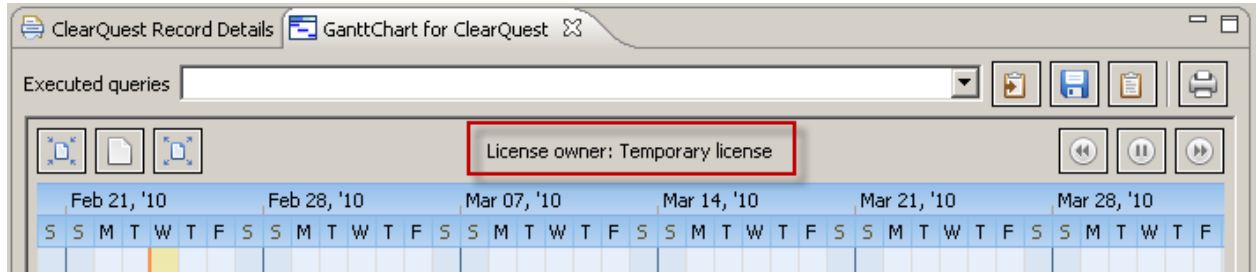


Figure 23. Result of the license installation

5. Update

To install the new version of the program, you need to perform the steps described in the Installation section (see section 3. Installation). Two options are available:

1. You can copy the installation package of the new version of GanttChart for ClearQuest to the folder of the previous installation and skip steps 3 and 4 of the installation procedure.
2. You can perform the installation from the new folder; at the step 3 remove the information about the previous installation package by clicking **Remove**.

6. Uninstallation

To uninstall the plug-in, perform the following steps:

1. In the **Help** menu, select **Software Updates, Find and Install** (see Figure 24. Opening the plug-in configuration window)

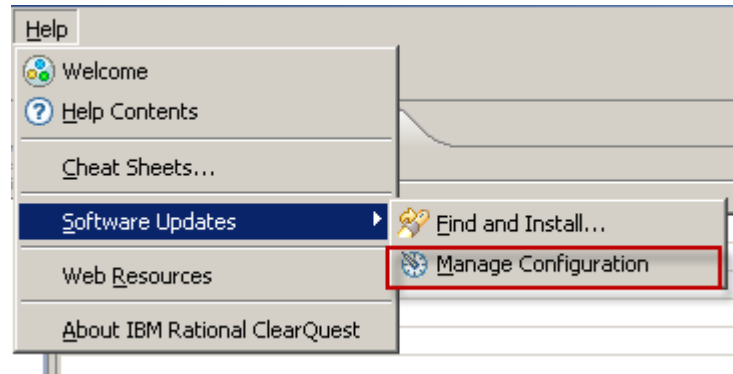


Figure 24. Opening the plug-in configuration window

In the Product Configuration window, select GanttChart for ClearQuest; on the right, in the information area, click Disable

2. (see Figure 25. Disabling the plug-in).

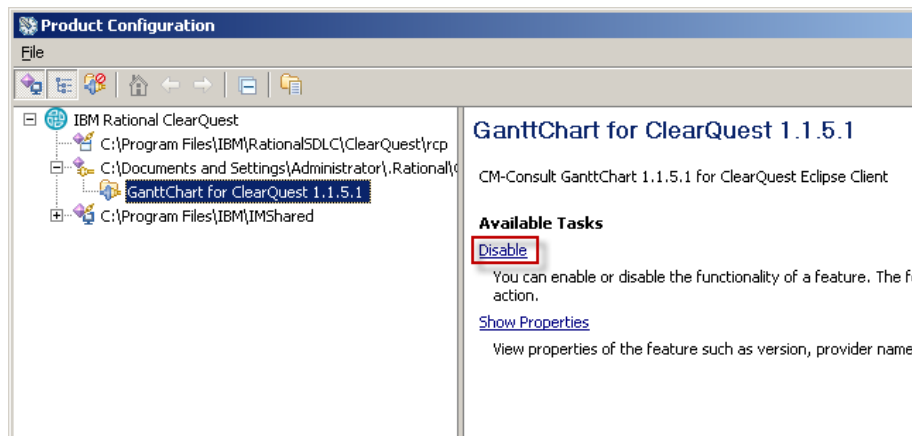


Figure 25. Disabling the plug-in

3. In the disabling confirmation dialog box, click **OK** (see Figure 26. Confirming the disabling of the plug-in).

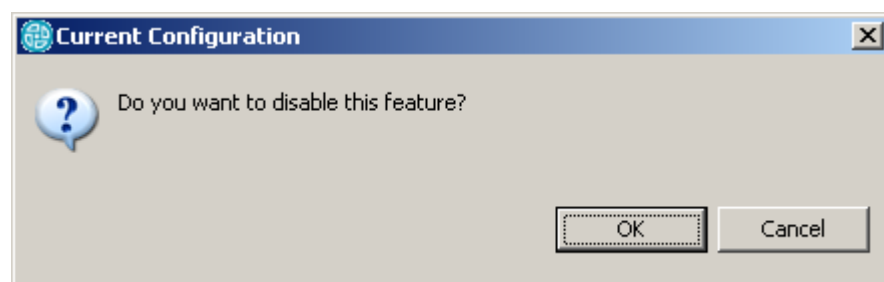


Figure 26. Confirming the disabling of the plug-in

4. In the restart request dialog box, click **YES** (see Figure 27. Application restart request).

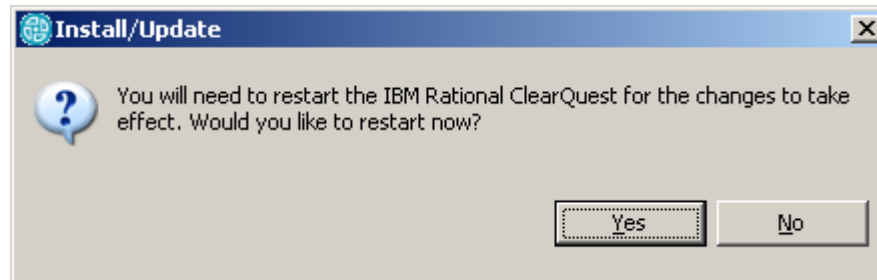


Figure 27. Application restart request

5. After the restart of IMB Rational ClearQuest, in the **Help** menu, select **Software Updates, Find and Install** (see Figure 24. Opening the plug-in configuration window).
6. In the **Project Configuration** window, make sure that the **Show Disabled Features** option is selected (see Figure 28. Displaying disabled plug-ins)

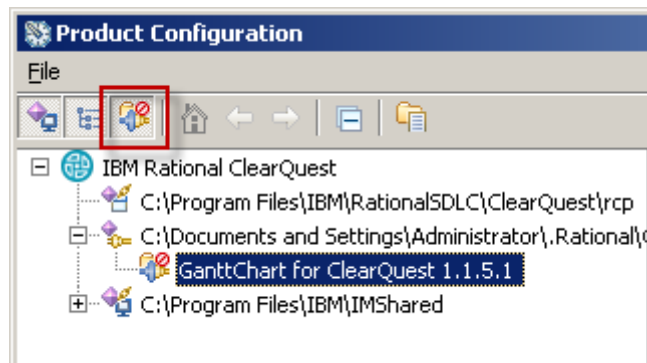


Figure 28. Displaying disabled plug-ins

7. On the left, select **GanttChart for ClearQuest**; on the right, in the information area, click **Uninstall** (see Figure 29. Uninstalling the plug-in). If several versions of the plug-in are displayed in the list, uninstall each of them by selecting them in the list and clicking **Uninstall**.

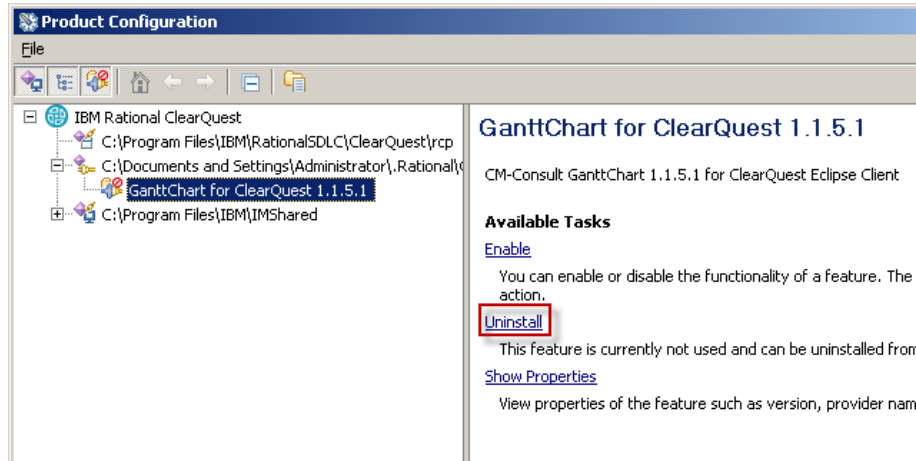


Figure 29. Uninstalling the plug-in

8. In the uninstalling confirmation dialog box, click **OK** (see Figure 30. Uninstalling confirmation request).

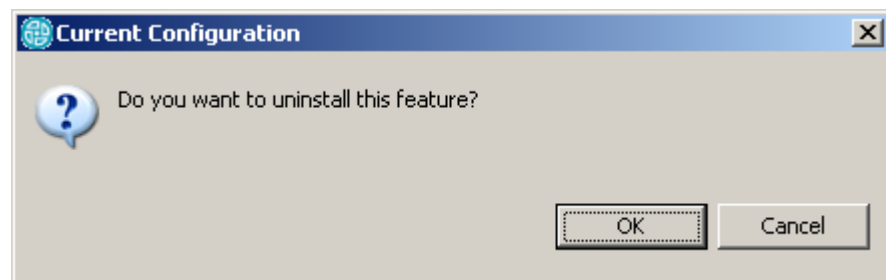


Figure 30. Uninstalling confirmation request

9. In the restart request dialog box, click **YES** (see Figure 31. Application restart request).

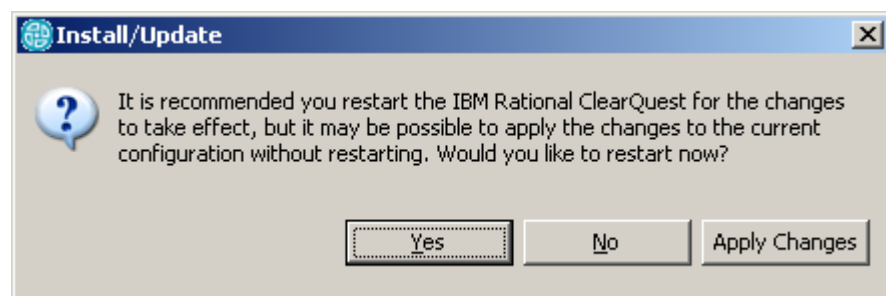


Figure 31. Application restart request

7. Known Issues

7.1 Problems with ClearQuest 7.0 after the plug-in installation

Description

After the installation of the plug-in and the restart of ClearQuest, the ClearQuest v.7.0.0 may hang; for the ClearQuest v.7.0.1 the following error may occur:

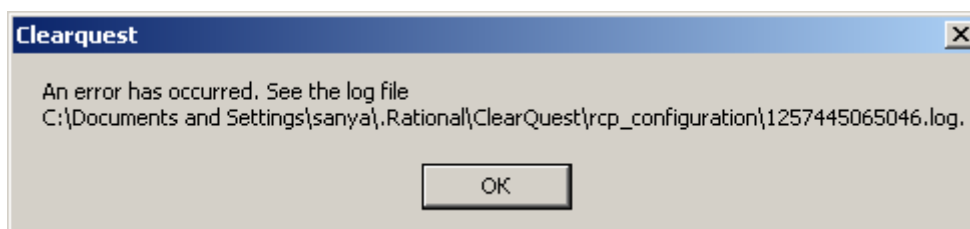


Figure 32. IBM ClearQuest 7.0.1 reports an error after the installation of the plug-in

Solution

1. Open the directory **C:\Documents and Settings\<user account>\.Rational\ClearQuest\rcp_configuration\org.eclipse.update.**
2. Delete the **platform.xml** file.
3. Start ClearQuest.
4. ClearQuest will automatically create the new **platform.xml** file.