

StarLink Manager

Version 2.2c

User's Guide

October 2010

Copyright © Babu Software. All rights reserved.

This document is for use with the StarLink Manager. Reproduction, transfer, distribution or storage of part or all of the contents in this document in any form without the prior written permission of Babu Software is prohibited.

1.0 Introduction

This document describes the StarLink Manager.

2.0 Overview

StarLink Manager is Remote Client for StarLink it uses to manage StarLink.

2.2 Features

Service management
User profile management
Credit rule management
Blocked rule management
Operator management
User friendly configuration
Fetch reports from server
Send message to server

2.3 About the Package Components

Here is a brief description of the components contained in the packages listed above:

- Remote Management Tool for StarLink 2.3

3.0 Software Requirements

- Windows 2000 with Service Pack 2 or Windows NT/XP/2003/Vista/2008/7.
- Microsoft Framework 3.5, freely available from the Microsoft web site at www.microsoft.com. Microsoft Framework 3.5 is highly recommended.
- Microsoft Internet Explore 5.5
- IIS 5.1
- **Service Requirements** StarLink 2.3 (Local / Remote)

4.0 User Roles

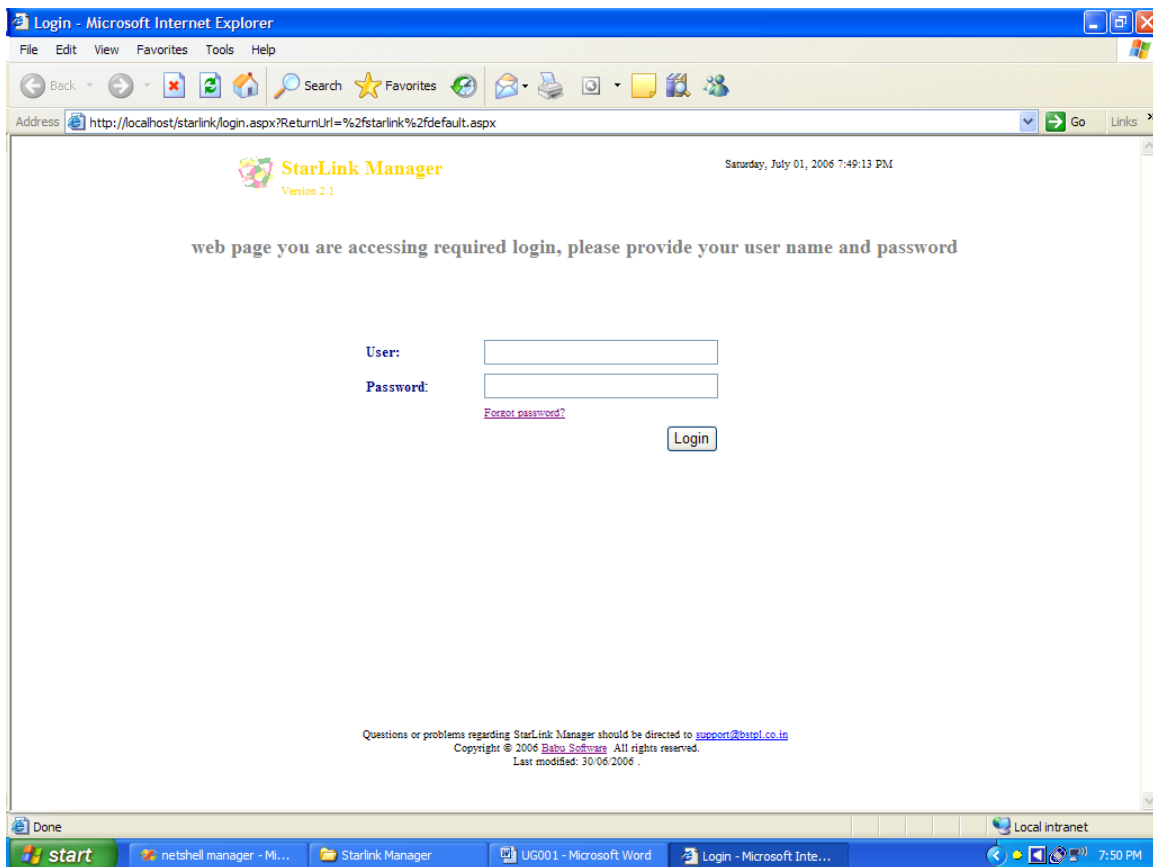
- Change Password
- Send Message
- Get Reports

5.0 Administrator Roles

- Service management
- User profile management
- Credit rule management
- Blocked rule management
- Operator management

6.0 How to login?

Open Internet Explorer and go to URL of *StarLink Manager* <http://localhost/StarLink/>



Screen 1: Login Page

7.0 Default Password and User

Default administrator of StarLink is *system@StarLink* and default password set to *manager*

8.0 FAQ

Q. Please provide default setting information?

A. default setting of StarLink Manager given blow

User/Password	system@starlink/manager
StarLink Manager default port	8021 TCP
StarLink Manager Configuration File	web.config
Location of configuration file	C:\Inetpub\wwwroot\StarLink

Q. Can Change of StarLink Manager port is possible?

A. yes change of port is possible.

Q. How to change StarLink Manager port?

A . Find out StarLink service host and port then Open Configuration file “web.config” in notepad. For Example I found that my StarLink service is running 9921 port host localhost so change port is required from 8021 to 9921

Change value from

```
client url="http://localhost:8021/RemotingSMS">
```

```
<wellknown type="service.StarLink.ServiceNeXT, service.StarLink"
url="http://localhost:8021/RemotingSMS/ServiceNeXT.soap" /> </client>
```

to

```
client url="http://localhost:9921/RemotingSMS">
```

```
<wellknown type="service.StarLink.ServiceNeXT, service.StarLink"
url="http://localhost:9921/RemotingSMS/ServiceNeXT.soap" /> </client>
```

Q. Always got message invalid mobile number, is any validation set for mobile number?

A. YES, mobile number validation set for 10 or 10 + digit numbers (e.g. +919415917612). if you require deferent mobile number validation contact to support team.

Q. Whenever I send command always got message *the underline connection was close: unable to connect remote server?*

A. this is due to service not available or invalid configuration. Find out correct configuration, service status from your StarLink Administrator.

8.0 For More Information

For more information about configuring and using the components in the packages, contact

Manoj Yadav

Babu Software

Phone Number: (+91) 9415917612

Or mail to support@bstpl.co.in

Website <http://www.bstpl.co.in>