

IREASONING INC.

---

# UltraSwing User Guide

# User Guide

---

Copyright © 2003 iReasoning Inc., All Rights Reserved.

The information contained herein is the property of iReasoning Inc. This document may not be copied, reproduced, reduced to any electronic medium or machine readable form, or otherwise duplicated, and the information herein may not be used, disseminated or otherwise disclosed, except with the prior written consent of iReasoning Inc.

iReasoning Inc.  
101 Convention Center Drive, 7th floor, Las Vegas, NV 89109

# Table of Contents

<b>INTRODUCTION .....</b>	<b>2</b>
<b>About this document .....</b>	<b>2</b>
<b>Target Audience .....</b>	<b>2</b>
<b>INSTALLATION.....</b>	<b>3</b>
<b>Requirements.....</b>	<b>3</b>
<b>Installation Procedures .....</b>	<b>3</b>
<b>USING UltraSwing LIBRARY .....</b>	<b>5</b>
<b>Docking/Floating .....</b>	<b>5</b>
<b>Outlook Side Menu.....</b>	<b>8</b>
<b>Split Pane.....</b>	<b>8</b>
<b>Enhanced JTable .....</b>	<b>9</b>
<b>Windows Explorer Type Icon List .....</b>	<b>10</b>
<b>StatusBar .....</b>	<b>10</b>
<b>Splash Screen .....</b>	<b>11</b>
<b>Dropdown button .....</b>	<b>11</b>

---

# INTRODUCTION

## About this document

**T**he purpose of this document is to provide the reader with enough knowledge to start software development with the UltraSwing Java GUI API. Some examples are provided to better illustrate the usage of APIs. This document is not intended to provide detailed information about APIs. To effectively use APIs, readers need to refer to javadoc help which has detailed instructions and examples.

UltraSwing is a set of library that greatly improve the java user interface design. The design and implementation of this library were based on object-oriented methodology and followed well-recognized design patterns, and combined with highly optimized code base, all those UltraSwing library stand above the competition.

## Target Audience

This document is intended for users and engineers who are responsible for developing Java GUI applications. One of the design goals of this library is to minimize the learning curve for users, make user write less code to achieve their programming job. So user will find it quite easy to learn and master this library.

## INSTALLATION

### Requirements

- JDK1.3 or later versions are installed. You can download JDK from SUN's web site (<http://java.sun.com/j2se/> )
- At least 32MB memory is required

### Installation Procedures

#### 1. Download and unzip

Download UltraSwing library and unzip to desired directory, for example, C:\lib\iReasoning\

The directory structure will look like the following:

<i>Directory Name</i>	<i>Description</i>
<i>lib</i>	contains binary jar files
<i>javadoc</i>	contains javadoc HTML files
<i>examples</i>	contains examples source code

#### 2. Set up CLASSPATH

us.jar needs to be added to CLASSPATH environment variable.

On Windows:

If UltraSwing library is installed at C:\lib\iReasoning\ultraswing

```
set CLASSPATH=C:\lib\iReasoning\ultraswing\lib\us.jar;%CLASSPATH%
```

**On Unix/Linux:**

If UltraSwing is installed at /usr/local/ireasoning/ultraswing, for C Shell:

```
CLASSPATH=/usr/local/ireasoning/ultraswing /lib/us.jar ; export CLASSPATH
```

### 3. Run example program (Optional)

To verify that everything is working, you can use demo.bat to run the example programs, or run “java -jar usexamples.jar”.

## USING UltraSwing LIBRARY

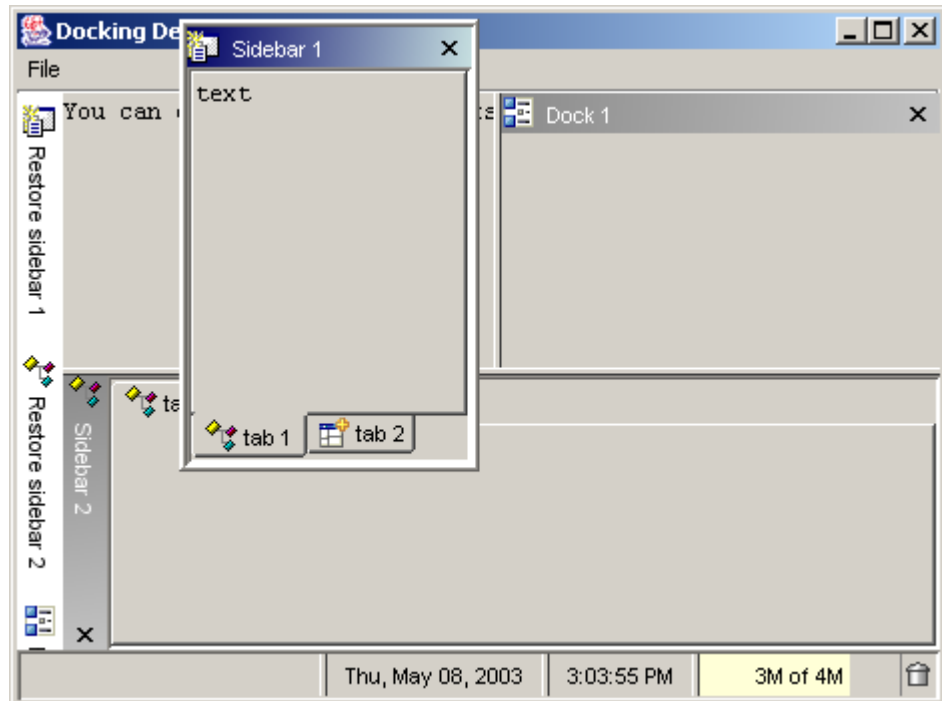
UltraSwing is a 100% Swing-based Java GUI library. It provides easy-to-use components that allows you to create polished, modern GUI applications. With this library, you can easily add advanced features, such as docking/floating, Outlook type side menu, to your GUI projects.

### Docking/Floating

The docking feature allows you to add dockable/floatable components to your applications. It provides the complete range of docking behaviors such as docking/floating, autohide, nested levels, state transitions, non-dockable/non-floatable options. A dockable/floatable component only can dock on a *CSplitPane* container.

➤ Docking/Floating

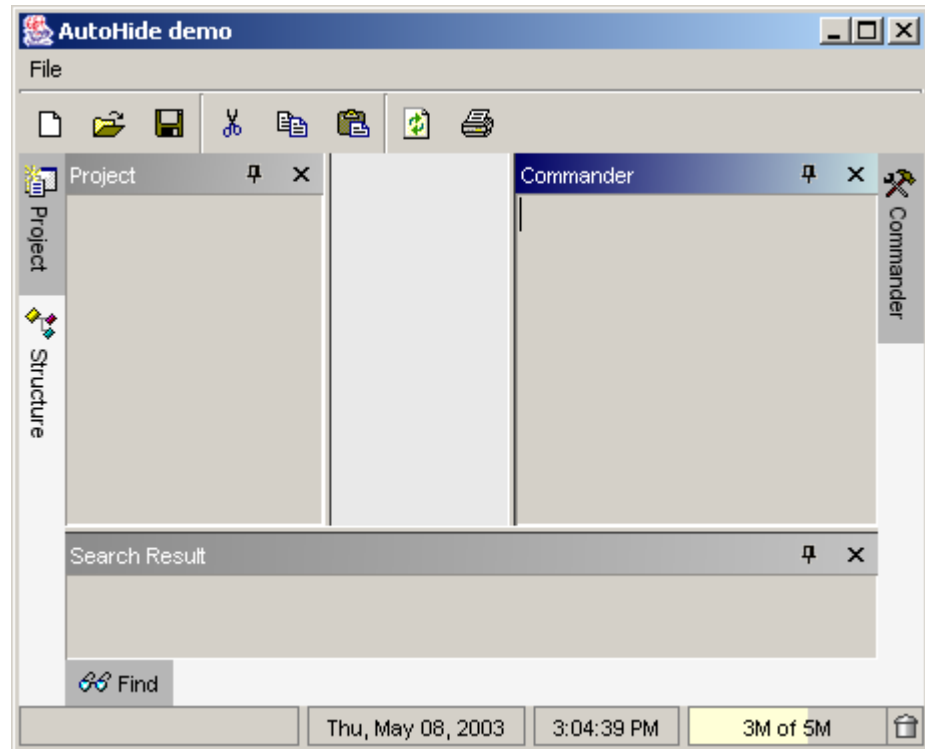
Powerful docking architecture allows you to add Visual Studio/MS office type docking/floating windows to your applications.





➤ AutoHide mode

Powerful AutoHide feature allows windows to be placed in a hidden mode. Hidden windows can be brought into view by mouse clicking the auto-hide tabs. It is similar to the docking features in popular IDEs, such as IDEA and Visual Studio.



➤ Nested floating

Float windows as individual frames or docked within other floating windows.

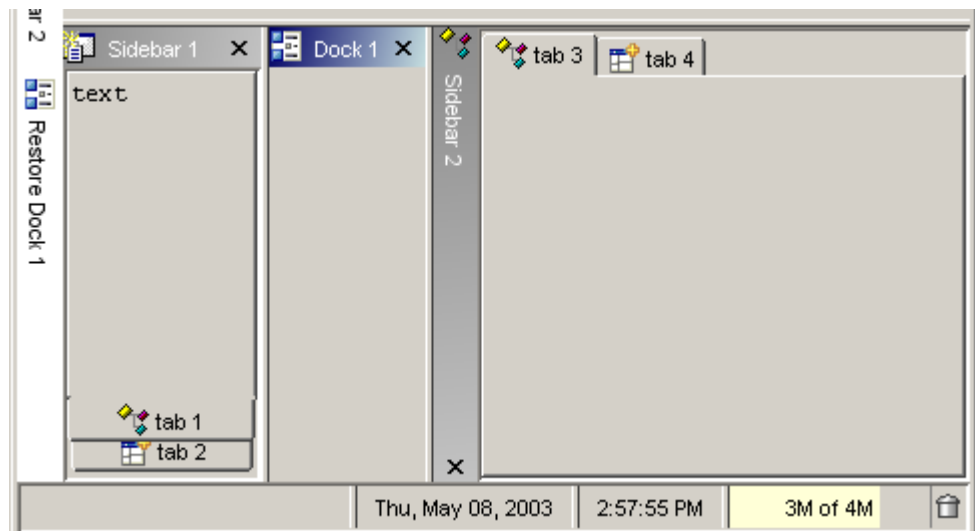
## Outlook Side Menu

It allows you to create a side menu similar to Outlook side bar.



## Split Pane

Unlike JSplitPane, CSplitpane can accept more than two components



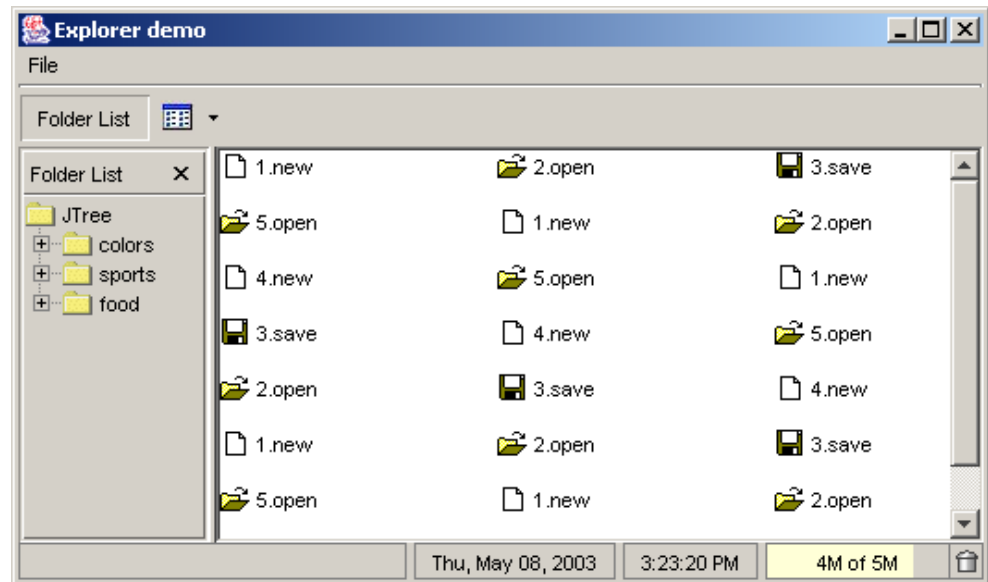
## Enhanced JTable

- Load data from database or CSV files
- Row headers
- Column sorting
- Alternate row/column color

CSV table Database ta...					
	First Name	Last Name	Sport	# of Years ▲	Vegetarian
rh0	Kathy	Walrath	Chasing tod...	2	false
rh1	Alison	Huml	Rowing	3	true
rh2	Angela	Lih	Teaching hig...	4	false
rh3	Mary	Campione	Snowboarding	5	false
rh4	Mark	Andrews	Speed reading	20	true

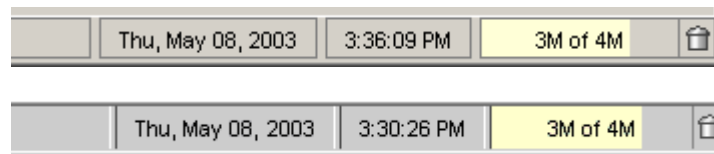
## Windows Explorer Type Icon List

It allows you to create components similar to Windows Explorer. (JDK1.4+ is required to use this icon list)



## StatusBar

- Two Styles: Flat and traditional



- Predefined panes: Time, date, JVM, Status, etc.

## Splash Screen

Easily add a splash screen to your application. Default Splash control can be used with just a couple lines of code. The splash screen can be displayed for a specified period of time or it can be explicitly closed.



## Dropdown button

A button type as on the Internet Explorer's toolbar.

